

NORTH AMERICA'S LARGEST METAL FORMING,
FABRICATING, WELDING AND FINISHING EVENT

November 16-18, 2016
Las Vegas, NV
fabtechexpo.com



NEW PRODUCT PREVIEW

A Sample of New Products Set
to Debut at FABTECH 2016

Visit **fabtechexpo.com**
for complete details.
Register now!



form
knowledge



fabricate
solutions



weld
relationships



finish
strong

Thank You
to Our
Platinum
Sponsors

AMADA

MITSUBISHI LASER



CONNECT WITH US! [f](#) [t](#) [in](#) [B](#)



Las Vegas, NV

November
16-18, 2016

Booth C29037

Advanced Automation for Multiple Processes.

ENGINEERED BY AMADA

At FABTECH 2016, Amada will showcase advanced automated systems and combined process technologies — engineered to maximize your efficiency, quality and profitability. Visit Amada in Las Vegas to witness the North American debut of three innovative machine solutions. The 9kW LCG 3015 AJ fiber laser with automated material handling and the HG 2204 ATC press brake equipped with a patented Automatic Tool Changer will be featured at booth C29037. In addition, the new HG 1303 Rm robotic bending system will demonstrate automated bending of large parts (*via live feed from the Schaumburg, IL Solution Center*). All three of these leading-edge solutions achieve unprecedented levels of productivity and repeatable accuracy.

You'll also experience the EG 6013 AR — the ideal automated bending solution for small, complex parts and the latest advances in punch/fiber laser combination technology highlighted in the LC 2515 C1 AJ. Amada has engineered Process Range Expansion into each of its innovative fabricating systems. For example, the C1 AJ allows you to cut, punch, form and tap on a single machine. Don't miss this opportunity to verify for yourself how Amada's advanced automation for multiple processes will enable you to:

- Increase productivity and profitability
- Achieve Process Range Expansion while reducing secondary operations
- Seamlessly handle rush jobs and high-mix/low-volume production
- Substantially reduce lead times and costs

Regardless of your specific manufacturing challenge, Amada has engineered the optimal solution to ensure your green light stays on.



Amada America, Inc.

180 Amada Court • Schaumburg, IL 60173 • 877-262-3287

www.amada.com/america

North American **DEBUT**



LCG 3015 AJ 9kW Fiber Laser with CL Automation

North American **DEBUT**



HG 2204 ATC Press Brake with Automatic Tool Changer

North American **DEBUT**



HG 1303 RM Robotic Bending System (*Via Live Feed*)



EG 6013 AR Automated Robotic Bending Cell



LC 2515 C1 AJ Punch/Fiber Laser Combination

SHARPEN YOUR EDGE

FABTECH 2016 will provide the strategies and insight needed to hone your competitive edge for improved quality, productivity and profitability. Come broaden your perspective and experience the future of manufacturing through live product demonstrations, top-notch education programs and networking opportunities. You'll discover the tools for solving today's challenges and sharpen your skills to take on tomorrow.

Get started today! REGISTER NOW at fabtechexpo.com

form knowledge

Gain valuable insight from more than 100 game changing sessions and special programs — taught by industry visionaries and in-the-trenches professionals.

fabricate solutions

Discover new ways to improve quality, productivity and your bottom line as you compare equipment and solutions from more than 1,300 exhibitors.

weld relationships

With more than 28,000 attendees and networking events on the floor and off, there's plenty of opportunity to meet new contacts and reconnect with old colleagues.

finish strong

FABTECH is the number one place to find the latest trends and technologies. The long-term benefits of spending three days at FABTECH are enormous.

TABLE OF CONTENTS

General Show Information	3
Hotel & Travel	4
Exhibitor List	5
New Products	9
Arc Welding	9
Assembly	9
Bending & Forming	9
Business Services	10
Coil Processing	12
Cutting	14
Fastening & Joining	14
Finishing	14
Gases & Gas Equipment	16
Inspection & Testing	16
Job Shop/	
Contract Manufacturing	17
Lasers	18
Lubrication	20
Maintenance & Repair	22
Material Handling	22
Other Machinery/	
Equipment/Parts/Products	22
Plate & Structural Fabricating	23
Press Brakes	24
Punching	24
Resistance Welding	25
Safety & Environmental	26
Software/Machine Controls	27
Stamping	28
Tool & Die	28
Tooling	28
Tube & Pipe Fabricating or Welding ..	29
Tube & Pipe Producing	30
Waterjet	31
Welding Consumables	31
Welding Machines	34
Show Special Events	35
Education Program	
Schedule-At-A-Glance	36

3 DAYS AT FABTECH EQUALS BIG RETURNS

FABTECH 2016 FEATURES:

- 1,300+ exhibiting companies
- 550,000+ net square feet of floor space
- 500+ new products
- 100+ educational programs
- Special events, unlimited networking opportunities and more!



FABTECH BLUES, BREWS & BBQ

This unique outdoor meeting area located outside Central Hall, is the perfect place to take a break and make new connections.



Open during show days from 11:00 AM until show close.

START PLANNING TODAY!

LOCATION

Las Vegas Convention Center
3150 Paradise Rd
Las Vegas, NV 89109

FABTECH 2016 SHOW HOURS

Wednesday, November 16 | 10:00 AM - 6:00 PM

Thursday, November 17 | 9:00 AM - 5:00 PM

Friday, November 18 | 9:00 AM - 4:00 PM

SHOW ADMISSION

Exhibit-only attendance is FREE through November 11, 2016. Beginning November 12, the cost to attend the exhibits is \$50. AWS, FMA, SME, PMA and CCAI members may always attend the exhibits for FREE with a valid member card.

HOW TO REGISTER

Register today online at fabtechexpo.com. Or, download a printer-friendly registration form from the website and fax to (508) 743-9696.

EXPLORE LAS VEGAS

Las Vegas remains the No. 1 tradeshow destination and is a 24-hour city that offers something for everyone. Get down to business during the day at FABTECH and at night explore The Entertainment Capital of the World. Find information on the sights and sounds of Las Vegas including dining, nightlife, shopping, local attractions and more at lasvegas.com.



GET THE BEST HOTEL SELECTION AND SAVINGS

Book your stay through onPeak, FABTECH's Official Hotel Provider, for guaranteed lowest rates and big benefits — including complimentary shuttle service, hotel parking and no booking or service fees! Reserve your rooms early for the best selection and price — hotels sell out quickly.

Visit fabtechexpo.com/accommodations



DOWNLOAD THE FABTECH MOBILE APP

The FABTECH app provides quick and convenient access to show information on the go! Find exhibits, a floor plan, education program, special events, an agenda planner and more.

Download today at fabtechexpo.com/mobile-app.

Sponsored by: 

Exhibitor List (as of 9/2/16)

Explore equipment and services from leading companies in the metal forming, fabricating, welding and finishing industries. Go to fabtechexpo.com for the most up-to-date exhibitor list.

FINISHING & COATING

ACT Test Panels LLC
Adhesive Systems Inc
AFC Finishing Systems
AkzoNobel Powder Coatings
Alconox
Alliance Manufacturing Inc
Allied Photo Chemical Inc
Allied Powder Coating
American Finishing Resources
American Industrial Sales LLC
Amibrica Inc
Anest Iwata USA Inc
APEL International
Argon Masking Corp
Arkema Inc
Asterion LLC
Astro Chemical Co Inc
Axalta Coating Systems
AZZ Galvanizing Services
Bari Coatings USA
BASF Corp
Bayco / Guspro Inc
Bex Spray Nozzles
Blast Cleaning Technologies
Blasttechnik Pte. Ltd.
Blastman Robotics Ltd
Bulk Chemicals Inc
Burleigh Industries
Calvary Industries Inc
Caplugs
Cardinal Paint and Powder
Carlisle Fluid Technologies
Castrol
Cataforesis SA de CV
Catalytic Combustion Corporation
Catalytic Industrial Systems
CFCM Canadian Finishing & Coatings Manufacturing
Cheil Grinding Wheel USA Inc
Chemetal US Inc
Chemical Coaters Assoc Int'l
Chemtec North America LLC
ClearClad Coatings LLC
Clemco Danmark A/S
Col-Met Engineered Finishing Solutions
Columbus Industries Inc
Combustion and Systems Inc
Coral Chemical Co
Custom Fabricating & Supplies
Daifuku North America - Jarvis B Webb Company
Dan Am Company - Sata Spray Equipment
Decorall System USA Corp
DeFelsko Corp
Dinamex Systems
DMP Corporation
Dosatron International Inc
Doucet Machineries Inc
DuBois Chemicals Inc
Durr Systems Inc
Echo Engineering
Eisenmann Corp
Elcometer Inc
Electrocoat Association, The
Ellis Paint Company
Empire Abrasive Equipment
Engineered Finishing Systems
Enhancement Technologies / Miroglio Textile
EPSI (Engineered Products & Services Inc)
Ervin Industries
Euroimpianti Srl
Eurosider S.a.s.
EXEL North America
Express Chem LLC
Fairsky Industrial Co Ltd
Filtermedia SRL
Fischer Technology Inc
Fluke Corporation
Fluke Process Instruments
Fostoria Process Equipment
Fuji Tool Co
Gema USA Inc
General Automatic Transfer
General Fabrications Corp
George Koch Sons LLC
Gibson Abrasive Equipment LLC
Global Finishing Solutions

FINISHING & COATING

Goff Inc
Graco Inc
HafoVac
Hammond Roto-Finish
Hedson Technologies North America
Henkel Corp
Hentzen Coatings Inc
Heraeus Noblelight LLC
Herr Industrial Inc
Hubbard-Hall Inc.
IFS Coatings Inc
IGP North America LLC
IHI Ionbond Inc
Intek Corporation
IntelliFinishing
International Thermal Systems LLC
IST International Surface Technologies
Jamestown Coating Technologies
Keyland Polymer Ltd
Klinger Paint Co
Kolene Corporation
Kyzen Corporation
LDPI Inc
LPI Inc
Magic Rack/Production Plus Corp
Metal Coaters
Metokote Corp
Micro-Surface Finishing Products
Midwest Finishing Systems
Mighty Hook Inc
MOCAP
NikoTrack LLC
Nordson Corp
Novacel
Parker Ionics
Paul Gardner Co
Peening Technologies
PEM Inc
PhoenixTM LLC
Plotterstore
Pneu-Mech Systems Mfg
Poli-Film America
Pollution Control Products Co.
Polymer Molding Inc
Powder Coating
Powder Coating Institute
Powder Parts Inc
PPG Industries Inc
Precision Quincy Ovens LLC
PriceWalgreen a division of George Koch Sons
Products Finishing
Protech Powder Coatings
Quaker Chemical Corporation
QuickLabel Systems
Rapid Cure Technologies
Raptor Blasting Systems
Reading Technologies Inc
Reliant Finishing Systems
Rhodes Systems International Inc
Richards-Wilcox Inc
Roberts Sinto Corp
Rohner
RRAMAC Connected Systems
Ruwac
Sankyo Rikagaku Co Ltd
Sculpt Nouveau
Selas Heat Technology
Sherwin Williams
sia Abrasives
Southern Systems Inc
Spray Systems Inc
Spray Tech/Junair
Stanza Machinery
SuperMax Tools
System Technologies
TCI Powder Coatings
Therma-Tron-X Inc
Tianson Co Ltd
Transmet Corp
Trimac Industrial Systems
Uni-Spray Systems Inc
United Industries Inc
United Surface Solutions
V&S Galvanizing LLC
Valmont Coatings
Vincent Clad Metals Corporation
Vitaflux Llc
Vitracoat America Inc

FINISHING & COATING

Vogel Industrial Coatings
VULKAN Blast Shot
W Abrasives
Wagner Systems Inc
Walther Pilot North America LLC
Webb-Stiles Co
Yeuell Nameplate & Label
Yingtian Jiangnan Copper Industry Co Ltd
FORMING & FABRICATING
1960 Seravesi SRL
Abas ERP
ABIMAQ - Brazilian Machinery and Equipment Association
Accurpress America Inc
AccuStream Inc
Advanced Machine & Engineering
ADVANCED Motion Controls
Ajan Elektronik Servis Sanayi Ve Ticaret Ltd St
AKS Cutting Systems Inc
Alliance For American Manufacturing
Alliance Machine and Engraving LLC
Alliance Steel LLC
Allied Machine & Engineering Corp
Allied Powers LLC
Allor Manufacturing Inc/
Plesh Industries
Allstrap Steel & Poly Strapping Systems
Alma CAM USA LLC
Alro Steel Corporation
Alternative Parts Inc
AM Machinery Sales Inc
Amada America Inc
Ambrell Induction Heating Solutions
American Cutting Edge
American Photonics
American Punch Co
American Technical Publishers
AMS Controls Inc
ANDRITZ Herr-Voss Stamco Inc
Anhui Huatian Mechanic Co Ltd
ANSYS
AP Laser
Apex Machine Group
Apex Precision Technology Corp
Armstrong Kover Kwick Inc
ARNITZ Inc
Arro-Mark Co LLC
Arrowhead Manufacturers & Fabricators Assoc
ASC Machine Tools Inc
ASKO Inc
ASTES4
Athader
Atlanta Drive Systems Inc
Automec Inc
AXOOM GmbH
Azarbod Inc
Barton International
Baykal Makine san ve tic A.S.
Beck Automation
Beckhoff Automation
Behringer Saws Inc
BEKO Technologies
BELFAB
Betenbender Manufacturing Inc
Bic Tool Co Ltd
Big Ass Solutions
Big Steel Rack
Black Hills Corporation
Blastec Inc
Blue Chip Engineered Products Inc
Blue Water Engineering Pty Ltd
BOFA Americas Inc
Boldrini Srl - Roundo Division
Bosch Rexroth Corp
Boschert Precision Machinery Inc
Bowlin Manufacturing Inc
Box On Demand
Bradbury Co Inc
Bradbury Group Australia
Bradbury Group PuMa
Bradbury Metal Tile Roofing Solutions

FORMING & FABRICATING

Braner USA Inc
Brass Knuckle Protection
Burghardt + Schmidt GmbH
Burnco Mfg Inc - Prodevco
Robotic Solutions
Burns Machinery Inc
Burny
Burr King Manufacturing Co
Bushman Equipment
Butech Bliss
BUWW Coverings Inc
Bystronic Inc
C Marshall Fabrication Machinery Inc
Cambco Inc
Camlock Systems
Carell Corporation
CASTEM HOUSTON LLC.
Centricut
CH Steel Solutions Inc
Changzhou City Wansui Tools Works
Chemtool Incorporated
Chicago Slitter
China Union Material (Shanghai) Co Ltd
Choice Waterjet Parts
Cidan Machinery Inc
Cincinnati Inc
CLARCOR Industrial Air I UAS
Cleveland Punch & Die Co
Cleveland Steel Tool Co
CMF
CMS North America Inc
CNA Insurance
CNC West
COAIRE Inc
Coherent Inc
Coldwater Machine Co
COLE-TUVE Inc
Comblift USA
COMEG Inc
CONCOA Inc
Controlled Automation Inc
Cornerstone Capital Partners
Cosen Saws
Costa Sanders
Cowles Tool Co
Creaform
CT Kesme Teknolojileri ve mak san Tic Ltd STI
CTD Machines
Current Inc
Custom Rollforming Corp
Daito USA Inc
Dake Corporation
Dalian Zhengshen Stainless Steel Precision Components Co Ltd
Dalmec Inc
Darex LLC
DAVI Inc
DCM Tech Inc
Delta Steel Technologies
Desert Diamond Industries
Design Data
Design Storage & Handling Inc
Design-2-Part
Diamond Wire Spring
Dimeco Coil Technologies Inc
Dimide Clamps
Dimplex Thermal Solutions
Disston Tools
DoALL Sawing Products
Donaldson Torit - Donaldson Company Inc
Doringer Cold Saws
Douglas Steel Supply Co
Dreistern Inc
Durma USA
E Jordan Brookes Co
Eagle Bending Machines Inc
Eastern Metal Supply
Ebbco Inc
Eberle America Inc
Econco/CPI
Edwards Manufacturing Co
EHT North America
Electrex Inc
Elumatec North America Inc
Emmegi USA Inc
Epilog Laser Corp

FORMING & FABRICATING

Ercolina - CML USA Inc
ERIEZ
ESCO Tool Co
Exact JobBOSS
F & B Manufacturing Llc
Fab Shop Magazine Direct
Fab Supply Inc
Fabricating & Metalworking Magazine
Fabricators & Manufacturers Association
FabSuite LLC
FabTrol An AVEVA Group Company
Faccin USA Inc
FANDELI Coated Abrasives
FARO Technologies Inc
Fascut Industries
Fastenix
Felton Inc
FF Journal/Modern Metals
Ficpe Corporation
Fixtureworks
Fladder-Hansen & Hundebol Inc
Flexarm Inc
Flow International Corp
FluidForming Americas
FomUSA
Formlabs
FreePoint Technologies Inc
F5Inspection
FST Fabrication Solutions & Technologies
Fuji Electric Corp Of America
Fujitsu Glovia Inc
Gas Control Systems Inc
Gasparini SpA
Genius Solutions
Gentec Electro-Optics
Global Shop Solutions
GMA Garnet USA Corp
GMC Machine Tools Corp
Golden Aluminum Inc
Gorbel Inc
Gratec Inc
Green Valley Manufacturing Inc
Gripnail Fastening Systems
GrishamWorks LLC
GSM America Inc
Guanghe Industry (Hong Kong) Co. Ltd
H2O JET Inc
Haberli / Ken Bergman & Associates LLC
Haco-Atlantic Inc
Haeger Inc
HAEUSLER AG Duggingen
Hafendorfer Machine Inc
Hako CNC Machine/Accurt (Anhui) Manufacturing Co Ltd
Hangzhou Ailong Metal Products Co Ltd
Hangzhou Xiangsheng Abrasive Machine Manufacturing Co. Ltd
Han's Laser / Gromax Enterprises Corp
Hans Weber Sales and Service Corp
Hayes International
HE&M Saw Inc
Hexagon Manufacturing Intelligence
Hiwin Corporation
Hornet Cutting Systems
Hougen Manufacturing Inc
Husky Rack & Wire
Hyd-Mech Group Ltd
Hydren Systems LLC
Hypertherm Inc
igus Inc
II-VI Infrared
IMSM Inc
Industrial Assets Machinery
Industrial Machine Trader
Industrial Machinery Digest
Industrial Magnetics Inc
Industrial Market Place
Industrial Molded Rubber Products
Industrial Photonics, a Photonics Media publication
Infor
InfoSight Corp

FORMING & FABRICATING

InnovMetric Software Inc
Integrous Steel Software Solutions
International Knife & Saw Inc
International Technologies Inc
INTERTEK
Iowa Area Development Group
IQMS
IRON
ISB
Iwatani Corp
JET
JET Edge
JETCAM-NestONE Solutions
Jinan Bodor CNC Machine Co Ltd
JMR Industrial
JMT USA
Jobscope ERP
Jorgensen Conveyors Inc
KAASST Machine Tools Inc
Kaspar Manufacturing
Kasto Inc
KBS Dished Heads
KD Capital Equipment LLC
Keller USA Inc
Kelly Services
Kentek Corp Laser Safety Div
Kern Laser Systems
Ketec Precision Tooling Inc
Keyedin Manufacturing Software Solutions
Kinetic Cutting Systems Inc
Kipp Inc
KMT Waterjet Systems Inc
Kolev Engineering Inc
Kurimoto Ltd
Laguna Tools
Lantek Sheet Metal Solutions
LAP Laser
Laser Experts / NUKON
Laser Marking Technologies LLC
Laser Research Optics
Laservision
Lazer Safe Pty Ltd
LENOX®
Lincoln Electric Co
LISSMAC Corp
LS Industries Inc
LT Ultra Precision Optics
Lumentum
LVD Strippit
Machinery Dealers National Assoc
Malico Inc
Manrepco Inc
Manufacturing News
Manufacturing Solutions
Marion Die & Fixture Inc
Marvel Manufacturing Co
Master Magnetics
Mate Precision Tooling
Mazak Optonics Corp
MB Metal Technologies LLC
MC Machinery Systems Inc
Measurement Systems Int'l a Rice Lake Weighing Systems Brand
MECCO
MegaFab-Piranha-Whitney-Bertsch
Messer Cutting Systems
Metal Center News
Metal Supermarkets Service Company Inc
MetalFinish LLC
MetalForming Inc
Metalix CAD/CAM Ltd
MetalMizer
MetaMation Inc
Metform International Ltd
Metsaw Systems Inc
Metrelec Inc
MG
Midwest Tool Inc
MIE Solutions Inc
Millner Haufen Tool Company
Minnesota Department of Employment and Economic Development
Mittler Bros Machine & Tool
Modern Manufacturing Technologies Int'l
Mohawk Machinery Inc
Morton Machine Works

FORMING & FABRICATING

MPI Magnetic Products Inc
MTC Bamieh Sri
Muller - Load Containment Solutions
MultiCam Inc
Murata Machinery USA Inc
MVD INAN Machine Tools Industry
MVD Machine Ind
Nadella Inc
Nantong Reliant Co Ltd
Nebraska Public Power District
New Electric
New Hampshire Industries
Ningbo Langyi Metal Products Co Ltd
Nitto Kohki USA Inc
NOMMA Fabricator
Norlok Technology Inc
North American Safety Products Inc.
NUKON USA
Oasis Scientific Inc
O'Brien Installations Ltd
Ocean Machinery Inc
Oerlikon Balzers
Oerlikon Metco (US) Inc
Ohio Laser LLC
OMAX Corp
OMCO
OmegaCube Technologies
Oncor
Ophir Optics LLC
Ophir Spiricon LLC
ORBIS Corporation
Osai Usa
Otto Trading Inc
Oxford Instruments
Pacific Press Technologies
Packsize International LLC
Pangborn Corporation
Pannier Corp
Paper-Less LLC
Parker Hannifin - Gas Separation and Filtration
Pat Mooney Inc
Paulo
PCI Gases
Peddinghaus Corp
PEP Technology
Perfection Global LLC
Permadur Industries Inc
Peter Prinzing GmbH
Polyurethane Products Corp
Precision Saws Inc
Press Brake Safety
Prima Power North America Inc
Project Tool & Die Inc
Pythox - A Lincoln Electric Company
Qneet LLC
Quality Vision International
Quantum Machinery Group
Quarid Ltd Lianyungang
Radan
RAS Systems LLC
Razoli Zubilla & Sohn GmbH
RDI Laser Blanking Systems
Red Bud Industries
Reservoirs Despres Tanks
Retoro Systems LLC
Rhino Cutting Systems
Richardson Electronics Ltd
Rigidized Metals Corp
Rocklin Manufacturing Co
Rodman Drill
Roller Die + Forming Co
Roper Whitney
Rosler Metal Finishing USA LLC
ROUND
Rousseau Metal Inc
RWM Casters Co
Ryerson
SafarDarley BV
Saime
Sakura of America
Salasco Inc
Salvagnini America Inc
Samco Machinery Ltd
Sawblade.com
SB Whistler & Sons Inc
Schelling America Inc

FORMING & FABRICATING

Schneider Electric
 Scotchman Industries Inc
 Semxy LLC
 Service Lamp Corp
 SES Salico Finishing and Processing LLC
 Shandong Jinfu Tools Co Ltd
 Shanghai Tongai Precise Aluminum Alloy Mfg Co Ltd
 Shaoming Inbon Machinery Co LTD
 Shop Data Systems Inc
 ShopTech Software
 SICK Inc
 SigmaTEK Systems LLC
 Site Location Partnership (SLP)
 Size Metal Inc.
 SKM Industries Inc
 Slatpro Tools
 Smartware Group
 SME
 Soitaab USA Inc
 SPANCO Inc
 Special Springs LLC
 SPI Lasers
 Splawn Belting Inc
 Spotti Sergio Coil Processing S.R.L.
 Spraying Systems Co
 Spyraffo Inc
 SSC Controls Co
 Stainless Structurals LLC
 STAM SpA
 State of Wyoming
 Steel King Industries Inc
 Sterling Machinery
 Stratasys Inc
 Striker Systems
 STRUMIS LLC
 Superfici America Inc
 Supra Machine Tool
 Syspro
 TAB Industries LLC
 Tapeswitch Corporation
 Team Oregon Advanced Manufacturing
 TECHNI Waterjet
 Technical Translation Services
 Tecnomagete Inc
 TeraDiode Inc
 TESAR S.p.A.
 The Bradbury Group
 The Extractor
 The FABRICATOR
 The M K Morse Company
 The Right Corner of Texas
 TigerStop LLC
 Timesavers LLC
 Tooling U - SME
 Toolmen Corp
 Torchmate
 Total Cut CNC
 Travelers Indemnity Company
 Tribogenics Inc
 Tri-Chem Corp
 Trilogy Machinery Inc
 Trimble
 Trim-Lok
 TRUMPF Inc
 Tseng Yin Industrial Co LTD
 UGS
 UniPunch Products Inc
 United Lens Co
 Universal Drilling & Cutting Equipment
 US Industrial Machinery Co
 Verisurf Software Inc
 VERNON Tool
 Viking Blast & Wash Systems
 Virtek Vision International
 VISUAL ERP Software
 VKS - Visual Knowledge Share
 Voortman Corporation
 Vytek
 W F Wells Inc
 Wachs Services - Wachs Fabrication Group
 Walker Magnetics
 Waterjet USA LLC
 Welser Profile GmbH
 Wemo International B V
 Wendt Machinery Movers
 Wheelabrator Group
 Wila USA
 Williams Metals and Welding Alloys Inc
 Wilson Tool International
 Workshops For Warriors
 Worthington Industries
 xTuple-World's #1 Open Source ERP
 Yangli Group Co Ltd

FORMING & FABRICATING

YESTOOL / Aloris USA
 Yoshikawa Iron Works Co Ltd
 ZEISS Industrial Metrology LLC
 Zund America Inc
METALFORM
 3D Systems, Cimatron Software
 AAF International
 ABC Metals Inc
 Accurate Die Design Software Inc./Logopress3
 Agathon Machine Tools Inc
 AIDA-America Corp
 Alma Machinery Co
 Almco Inc
 Almetals Company
 Anchor Manufacturing Group Inc
 Anshan Hafen New Material Co. Ltd
 AP&T North America Inc
 ART Technologies Inc
 Atago USA Inc
 Autodesk Inc
 AutoForm Engineering USA Inc
 Automated Tapping Systems
 Bad Dog Tools
 Balluff Inc
 Beckwood Press Co
 Benteler Maschinenbau GmbH
 Bestar LLC
 BesTech Tool Corp
 Bohler Uddeholm Corp
 Brown Boggs Machine Co
 Bruderer Machinery Inc
 Buderus Edelstahl GmbH
 Cadence Inc
 Century Spring Corp
 Champion Tools
 China TJK Machinery Co Ltd
 COE Press Equipment Corporation
 Colt Automation LTD
 Dallas Industries Inc
 DAYTON Lamina Corporation
 Deere Minmettal Group Co. Ltd
 Dees Hydraulic Industrial Co Ltd
 Delta Computer Systems Inc
 DG Associates
 Digital Lumens
 Dirinler AS
 Dongguan Changhong Metal Technology Co LTD
 Dongguan Gooming Mechanical Co Ltd
 Dongguan Pinyi Automation Technology Co Ltd
 Dongguan SYH Tooling Co Ltd
 DTC Products Corporation
 Durable Superior Casters
 Dynaform/ETA
 Dynamic
 Eagle Metals
 EAS Mold & Die Change Systems Inc
 ECECO Inc
 Empowering Technologies
 Engineered Components
 Enprotech Industrial Technologies
 Epicor Software Corporation
 Erectastep
 Erickson Metals Corp
 ESI North America
 Etna Products Inc
 EuroLink Inc
 Excelsior Hardware & Plastic Co Ltd
 F & G Tool and Die Co
 Fagor Arrasate
 Feed Lease Corp
 Fibro Inc
 Forming Technologies Inc
 FORMTEK-ME
 Fox Valley Spring Co LLC
 Fuchs Lubricants Co
 Fuxin Jiufeng Hydraulic Co. Ltd
 Gefran
 Gipontech Company Limited
 GOMeasure3D
 Greener Press & Machine Company Inc
 Gruber Tool & Die Inc
 G-W Group
 Hangsterfer's Laboratories Inc
 Hefei Metalforming Intelligent Manufacturing Co Ltd
 Heim Group, The
 Hennig Inc
 Heraeus Electronics
 Hilma Div Carr Lane Roemheld
 HINNLI CO LTD
 Hitachi Metals America

METALFORM

Hong Kong Metals Manufacturers Association
 HONGJIU Automotive Components Tool & Die Co Ltd
 Houghton International Inc
 Hsin Fu Chia Industrial Co Ltd
 HTM Sensors
 Hutchison Tool Sales Co
 Hydraulic as
 Industrial Innovations Inc
 Intercomp
 Interlaken Technology
 International Mold Steel
 IV-S Metal Stamping Inc
 Jarvis Cutting Tools
 Jet-Set
 Ji' An RuiPengFei Precision Technology Co. Ltd
 Jiaying Everis Hardware Manufacturing Factory
 JIT Automation Inc
 J-Tech
 Kaeser Compressors Inc
 Kayser Ltd
 KDDL - Eigen
 Kinline Tool & Die Co. Ltd.
 Kleen Performance Products
 Komatsu America Industries LLC
 Kosmek USA
 Kovatch Castings Inc
 Kovinoplastika Loz D.D.
 Kunshan Dersun Precision Mould Co Ltd
 Kunshan Eagle Precision Tooling Co Ltd
 Lakeside Casting Solutions LLC
 Latrobe Specialty Metals Distribution
 Lauffer GmbH & Co KG
 Lee Contracting Inc
 Lenzkes Clamping Tools Inc
 Liaoning Fu-An Heavy Industry Co. Ltd
 Linear Transfer Automation Inc
 Link Electric & Safety Control
 Logopress3/Accurate Die Design Software Inc.
 LSP Industries Inc
 Lucky Harvest Co Ltd
 MachineMetrics
 Macrodyne Technologies Inc
 Mayfran International Inc
 Meccanica Rossi USA Corp
 Metalloid Corp
 MetalRustGuard
 MJC Engineering & Technology Inc
 Moeller Precision Tool
 Multipress Inc
 Neff Press Inc
 Nidec Minster Corp
 Ningbo Goanwin Machinery Manufacturing Co Ltd
 OGS Industries
 OMC North America
 Orimec Corporation of America
 Ortech Inc
 Overton Industries
 Ozkoc Hidrolik Makina San Ve Tic AS
 P/A Industries Inc
 Pacesetter Systems
 Pax Products Inc
 PEE WEE GmbH
 Penn United Technologies Inc
 PennEngineering
 Peterson Spring
 Philpott Rubber/
 Lankhorst Mouldings
 Plex Systems
 Pottiez America LP
 Precision Metalforming Association
 Precision Punch Corp
 Precision Stamping Products
 Precision Steel Warehouse Inc
 Prescor LLC
 Press Room Equipment Co
 Pressroom Electronics Inc
 Pronic Inc
 Proto Labs Inc
 Punch Press
 Ready Technology Inc
 Ross Controls
 Ross Technology Corp
 RUF Briquetting Systems
 Ruian Jianxin Machinery Manufacturing Co Ltd
 Sangiacomo Presses Americas LLC
 SB Specialty Metals LLC

METALFORM

Schuler Incorporated
 schwarz GmbH
 SelfLube
 Serapid Inc
 SEYI-America Inc
 Shandong Yanguo Jingyagang Precision Co Ltd
 Shenyang Metal Tech Co. Ltd
 Shenzhen HuaYuanDa Technology Co Ltd
 Shenzhen Meinie Tool & Die Co Ltd
 Shop Floor Automations Inc
 ShopEdge Software Inc
 ShopFloorConnect
 SIMPAC Inc
 Solar Atmospheres
 Soph Inc
 Stamtec Inc
 Starrett Company
 Stripmatic Products Inc
 Strothmann Machines & Handling GmbH
 Superior Die Set Corp
 Sutherland Presses
 Telos Global LLC
 Toledo Integrated Systems
 Toptime Precision Electronics Co Ltd
 Torque Technologies Inc
 Torstep International Inc
 Tower Oil & Technology Co
 Trans-Matic
 TURCK Inc
 Ulbrich Stainless Steels & Special Metals Inc
 Ultratech Tool & Design Inc
 Unisorb Installation Technologies
 Unist Inc
 United Aluminum Corp
 United Machine Corp
 United Performance Metals
 Van-Am Tool & Engineering LLC
 Vaughn Manufacturing Co
 Versatility Professional Tool Storage
 VIA Information Tools Inc
 Vibro/Dynamics LLC
 Victory Tool
 Vidir Machine Inc
 Voith Turbo Inc
 Weld Systems Integrators Inc
 Wilco Inc
 Wilson Tool International
 Wintriss Controls Group LLC
 Wuxi Micro Research Precision Press Parts Co. Ltd
 WuXi QuanSheng AnRen Machinery Co Ltd
 Wysong
 Xinyongxu Metal & Die (shenzhen) Co Ltd
 Yin Shen Machinery Co. Ltd (YSM)
 Yong Da Precision Mould (Dong Guan) Co Ltd
 Yuyao Jingqiao Hardware Factory
 Zapp Precision Strip
 Zerust Corrosion Solutions

TUBE & PIPE

3D Fab Light
 5 Star Engineering and Maintenance
 Accurate Technology Inc
 Accurex Measurement Inc
 Addition Manufacturing Technologies
 Advanced Tubular Technologies Inc
 AIM Inc
 Ajax Tocco Magnethermic Corp
 Allied Powers LLC
 Alpine Bender Machinery
 Ampco Metal Inc
 ASMAG USA Inc
 Bend Tech
 Bihler of America Inc
 BLM GROUP USA Corp
 Bollhoff USA
 Bonal Technologies Inc
 Brandt Engineered Products Ltd
 Cambridge Vacuum Engineering
 Cella North America
 CHYODA / MARUKA
 Clark Fixture Technologies
 CMP Automation
 COB Industries Inc
 Comblift USA
 Comco USA Inc
 Craters & Freighters
 Crippa USA LLC

TUBE & PIPE

CTA Amercas
 Current Tech
 Cy Laser America LLC
 Design Storage & Handling Inc
 DEWALT - Power Tools & Abrasives
 Diamond Saw Works Inc
 Doerrenberg Edelstahl GmbH
 Dynabrade Inc
 Eddytech Systems Inc
 eldec LLC
 EnergynTech Inc
 Euroboor USA
 Euromaquina S.L.
 Exact Pipe Tools Inc
 FabPro1
 FD Machinery
 FIT RITE Systems LLC
 Flange Armour Inc.
 FOCUS GmbH
 Fontijne Grotnes North America
 Formdrill USA Inc
 Fromm Packaging Systems
 Gem Tool Corporation
 Guild International
 HGG Profiling Equipment BV
 Horn Machine Tools Inc
 HOSO Metal Co Ltd
 Huth - Ben Pearson International LLC
 IMC Marks LLC
 Innovative Tube Equipment Corp
 INNOVO Corp
 J & S Machine Inc
 Kent Corp
 Kistler Machines
 LANS Company Inc
 Lillback USA
 Lomar Machine & Tool Co
 Macitech On-Site: Field Machining Solutions
 Manchester Tool & Die Inc
 Manufacturing Solutions Industries Inc
 MARUhide KOKI CO. LTD.
 Metaloid Corp
 Metronor Inc
 Mill Masters
 New Form Tools Ltd
 Nucor Buildings Group
 Numalliance Inc
 OMNI-X USA
 Overton Industries
 Pan Taiwan Enterprise
 Passline Performance
 Patterson Fan Co
 PDM Steel Service Centers Inc
 Pensa Labs / D.I. Wire
 Phil
 Pillar Induction
 Pines Engineering
 Polytec Inc
 Production Tube Cutting Inc
 PROTUM USA LLC
 Proto-1 Manufacturing
 Qatar Steel Industries Factory
 REA Elektronik Inc
 RF System Lab
 RIDGID
 Roland Industrial Electronics LP
 Roll Machining Technologies & Solutions
 Saar Hartmetall USA LLC
 Sage Automation Inc
 Samuel Packaging Systems Group
 Sanderson Machines Ltd
 Schwarze-Robitec GmbH
 Schweissen & Schneiden
 SST Forming Roll Inc
 Starbend Srl
 T&H Lemont
 T-DRILL Industries Inc
 Tenryu America Inc
 ThermaTool Corp
 Tools for Bending
 Tube & Pipe Technology
 Tube Bending Concepts Inc
 Tube Form Solutions
 Tube Works Inc
 Tubeshark and Accu-Tapper
 Tubex Technology Machinery
 Tubing Central
 Tusco Tube
 Unison LTD
 Universal Controls Group
 Universal Tool & Engineering
 Universal Tube & Rollform Equipment Corp
 US JaClean Inc
 Vulcan Tool Corp

TUBE & PIPE

WAFIOS Machinery Corp
 Walhonde Tools Inc
 Watts Specialties Inc
 Wauson Machine & Manufacturing Inc
 Well Engineering North America
 Winton Machine Company
 Xuji Titan & Material Co Ltd
 YLM USA Inc
WELDING
 3M
 ABB Inc-Robotics
 ABICOR BINZEL
 Accuracy Machine
 Ace Industrial Products
 AGT Robotics
 Aimtek Inc
 Airflow Systems Inc
 Airgas Inc
 Alabama Laser
 Alabama Robotics Technology Pk
 Alfra USA LLC
 A-Line Pipe Tools Inc
 Alicryo
 Allegro Industries
 ALM Positioners Inc
 American Innovative Manufacturing LLC
 American Society For Nondestructive Testing
 American Torch Tip Co Inc
 American Welding Society
 American Wire Research
 AMET Inc
 Amico Power
 Andersen Industries Inc
 Antra Robotics Systems Inc
 Anthony Welded Products Co Ltd
 Aquasol Corp
 Arc Machines Inc
 Arc Products
 ARC Specialties Inc
 ArcLabs Welding School
 ARCON Welding Equipment LLC
 Artotic
 ASSA ABLOY Entrance Systems
 Associated Technologies Weld Mount
 ATI Industrial Automation
 Auburn Manufacturing Inc
 AUTOIT Co Ltd
 Automatic Welding Wire Company, Inc.
 Avani Environmental Intl Inc
 AVS Industries LLC
 Axellent Inc
 AXAIR USA
 B&B Pipe & Industrial Tool
 Becken Technology Development Limited
 Beijing Essen Welding & Cutting Fair
 Beijing Metals & Minerals Corp
 Bernard
 BESSEY Tools North America
 Beveler USA
 Beveltools
 Blackbird Robotics North Ameri
 Bluco Corp
 Bob Dale Gloves
 Bore Repair Systems Inc
 Boss Products LLC
 Bradford Derustit Corp
 Broco Rankin
 BTIC America Corporation
 BTM Company LLC
 Buffalo Shrink Wrap
 BUG-O Systems
 Bullard
 Canaweld Inc
 CANTESCO®
 Capital Weld Cleaners
 CEI
 CEIA USA
 CEMIT North America Inc
 Cepro International
 Cerbaco Ltd
 CGW-Camel Grinding Wheels USA
 Changzhou Asia Science & Technology Co Ltd
 Changzhou Golden Globe Welding & Cutting Equipment Co Ltd
 Changzhou Huarui Welding & Cutting Equip Co Ltd
 Changzhou Shine Science & Technology Co Ltd
 Changzhou Wow International Trade Co Ltd
 Changzhou Zhengyang Welding Material Co Ltd

WELDING

Chart Inc
 Chicago Pneumatic Tool Co
 Cibo NV
 CK Worldwide
 Clamptek USA Inc
 Cloos Robotic Welding Inc
 Cold Jet
 Complete Filtration
 Computers Unlimited
 Continental Abrasives
 Controlled Automation Inc
 COR-MET Inc
 Coxreels Inc
 CS Unitec Inc
 Cuda Grit
 Cyl-Tec Inc
 D/F Machine Specialties Inc
 Dakota Ultrasonics
 Danatronics Inc
 Dataweld Inc
 DBM Automatizacija SA De CV
 Dengensha America Corp
 Diagraph MSP an ITW Company
 Diamond Ground Products Inc
 DIG Automation Engineering Co Ltd
 Dino-Lite Scopes (BigC)
 Dinse Inc
 Direct Wire & Cable
 Divel Inc
 Diversitech
 Dr Shrink Inc
 DualDraw LLC
 Dynamic Laboratories
 Dynatorch Inc
 E. H. Wachs
 Easom Automation Systems Inc
 Eisele Connectors Inc
 Elderfield & Hall / Pro-Fusion
 Electron Beam Technologies Inc
 Encompass Machines Inc
 Ensitech
 ESAB Welding & Cutting Products
 ESTA Extraction USA LP
 Fagor Automation Corp
 Fairsky Industrial Co Ltd
 FANUC America Corp
 Farina (Jinan) Weldtec & Machinery Co Ltd
 Fastenal Company
 Fein Power Tools Inc
 Filter 1
 Flame Technologies Inc
 Flange Wizard Tools
 FlashCut CNC
 Flexovit USA Inc
 Forney Industries Inc
 Fronius USA LLC
 FumeVac
 Fusion Inc
 G&J Hall Tools Inc
 G.B.C. Industrial Tools S.p.A.
 Ganzhou Hongfei Tungsten & Molybdenum Materials Co LTD
 GE Schmidt Inc
 Gemtex Abrasives
 Genesis Systems Group
 Genstar Technologies Inc
 Goff's Enterprises Inc
 Golden Eagle Minmetals(Beijing)
 Wldg Materials Co
 Goldland Industrial Co LTD
 Goss Inc
 Greenweltech
 Guidel Inc
 Gullico International
 Hangzhou Sida Machinery & Electronics Co.
 Hangzhou Topwell Technology Co. Ltd.
 Hankook Weldtek Co Ltd
 Harbert's Products Inc/Allied Flux
 Reclaiming Ltd
 Harris Products Group
 HBS Studwelding Inc
 Hebei Xinyu Welding Co. Ltd.
 Heck Industries
 Helvi S.p.A
 Henan Huamao Metal Materials Co Ltd
 Hermes Abrasives Ltd
 Heron Machine & Electric Industrial Ltd
 Heshan Wode Tungsten & Molybdenum Co Ltd
 Hisco
 HIT Welding Industry Co Ltd
 Hobart Brothers
 Hobart Institute of Welding Technology
 Hotfoil EHS Inc



PERFORMANCE



**“Off the line” capability backed by science.
A lifetime of value backed by service.**

At COE Press Equipment, our goal is your productivity. We demonstrate our coil processing equipment performance through analysis and hard numbers — not by sales talk — so you always receive the best machine for your operation. And, our proactive service team ensures that you continue to perform optimally, maximizing uptime and profitability.

The best equipment. The best service.

COE
PRESS EQUIPMENT

586-979-4400
COEPRESS.COM

Check out COE's
service van in booth
C12060 at FABTECH
to learn more.



WELDING

Hubei Zheyu (Goldsense)
Machinery & Equipment
Hypertherm Inc
IBEDA/Superflash Compressed
Gas Equipment Inc
Ideal Welding Systems LP
igm Robotic Systems Inc
Imperial Systems Inc
Industrial Air Solutions Inc
Infra S.A. de C.V.
Innerspec Technologies
Innovative Product Ideas LLC
Interactive Safety Products Inc
Intercon Enterprises Inc
International Welding
Technologies Inc
InterTest Inc
IPG Photonics
IRCO Automation Inc
Ironworkers Management
Trust (IMPACT)
IVEC Systems
JASIC Technologies America Inc
Jennings Weld Gauge Co LLC
Jiangsu Guotai International
Group Guomao Co Ltd
Jiangsu Haoguanjia Rubber
Industry Co. Ltd
Jiangyin Xinlian Welding
Equipment Co Ltd
Jinzhou Special Welding
Electrode Co Ltd
Jisheng Electric Machinery Co Ltd
JLC Electromet Pvt LLC
John Tillman Co
Joysun Abrasives Co Ltd
JP Nissen Co
JR Automation Technologies
Kalas Wire Inc
Kawasaki Robotics (USA) Inc
Kayo Products Co Ltd
Kemper America Inc
Kent Stud Welding Co Ltd
Klimawent USA LLC
KLINGSPOR Abrasives Inc
Kobelco Welding of America Inc

WELDING

Koike Aranson Inc
Koike Aranson Inc/Ransome
Kugler of America LTD
KUKA Robotics Corporation
Laboratory Testing Inc
LA-CO Industries Inc
Laiwu Taishan Sunshine Welding
Materials Co Ltd
Laizhou Hongyuan Bench Vise
Manufacture Co Ltd
Laser Mechanisms Inc
Laserline Inc
Lasermet Inc
LaserStar Technologies Corp
Lianyungang Orientcraft
Abrasives Co Ltd
Liberty Glove and Safety Inc.
Liburdi Automation Inc
Lincoln Electric Co
Linemaster Switch Corp
LONGEVITY Global Inc
LORD Corporation
Luvata Ohio Inc
Lynn Welding
Magnatech LLC
Magnum Reels
Makita Industrial Tools
Maryland Brush Co
Mathey Dearman
Matsumoto US Technologies Inc
McDantim Inc
MCR Safety
Meltric Corp
Mercer Industries
Meta Vision Systems Inc
Metabo Corp
Metal Man Work Gear Co
Metal Science Technologies
Pty Ltd
Michigan Pneumatic Tool Inc
Micro Air
Mid alloy
Miller Electric Mfg Co
MK Products Inc
Morris Engineering Works Ltd
Motoyuki Co. Ltd
MSC Software Corporation

WELDING

MTA-USA LLC
Multi-Contact USA
Murrplastik Systems Inc
Nation Wide Products
National Standard
Navus Automation
NBM Metals
Nederman LLC
Nelson Stud Welding Inc
New Fire Co Ltd
Newland (Tianjin) Welding Wire
and Metal Products Co Ltd
Ningbo Kimpin Industrial Pte Ltd
Ningbo Powerway Alloy Material
Co Ltd
Ningbo Qisheng Welding Tools
Plant
Ningbo Starex Welding & Cutting
Tech Technologies
nLIGHT Corp
Norton I Saint-Gobain
Nuova C.M.M. Srl
OCTOPUZ Inc
Olympus
Optrel Inc
OR Lasertechnology Inc
Orbitium Div / EH Wachs
OT-AWT (Wenling) Machinery
Co Ltd
OTC DAIHEN Inc
Oxylance Inc
Pador Marketing Group
Panasonic Factory Solutions
Company of America
Pandjiris Inc
PDS Bartech Inc
Pearl Abrasive Co
PFERD INC
Phoenix International Inc
Plasma Automation Inc
plasma USA LLC
Plymovent Inc
Polymet Corp
Praxair Inc
Precitec Inc
Precio Inc
Pro Spot International

WELDING

Production Design Services
Inc (PDSI)
PROFAX / LENCOR
Professional Plastics Inc
PTR-Precision Technologies Inc
PushCorp Inc
Pyro Shield Inc
Qingdao Everbest Trading Co Ltd
Radyne Corp
Rasco FR
Red Rock / Romar / MEC LLC
Reel Quality Products Inc
Revco Industries Inc (Black
Stallion / BSX)
Rex-Cut Abrasives
Rhodius
Rite Hite Machine Guarding
Robotmaster
Robots At Work
RoboVent
Rolled Alloys
RoMan Manufacturing Inc
rose plastic USA LLLP
Saf-T-Cart Inc
Sandvik Materials Technology
SanRex Corp
Schaefer / Pinnacle Climate
Technologies
Schneldorfer Maschinenbau
GmbH
SciAps Inc
Sellestrom Manufacturing Co
Servo-Robot Inc
SFA Companies
Shandong Aotai Electric Co Ltd
Shandong Huaye Tungsten &
Molybdenum Co Ltd
Shandong Juli Welding Co LTD
Shanghai Gas Welding Equipment
Co Ltd
Shanghai Huawei Welding &
Cutting Machine Sales Co. Ltd.
Shanghai TAYOR Heavy Industry
(Group) Co Ltd
Shanghai Welding & Cutting
Tool Works

WELDING

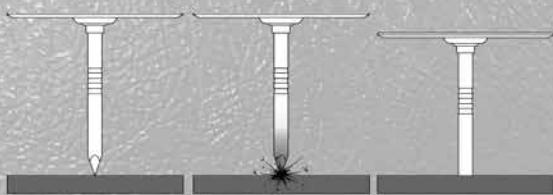
Shenzhen Action Welding
Technology Co Ltd
Shenzhen Donyun Welding
Equipment Co Ltd
Shenzhen Yaorong Technology
Co Ltd
Sherwin Inc
Sideros Engineering Srl
SMA Speciality Manufactured
Abrasives
SMC Corp Of America
Southern Copper & Supply
Southern Stud Weld Inc
Special Metals Welding
Products Co
Spectro Analytical Instruments
Staubli Corp
Steelmax Tools
Steiner Industries
Strong Hand Tools
Strong Hold Products
Sunner Industrial Products Inc
Sumig USA Corporation
Sumner Manufacturing Co Inc
SUNIS International LLC
Superior Abrasives LLC
Surface Engineering Alloy Co
Surface Flow Technologies Inc
Tanic Inc
Taylor-Winfield Technologies Inc
Team Industries Inc
TEC Welding Products
Techflex Inc
TECMEN Electronics Co Ltd
Tennessee Rand Inc
Thermacut Inc
Thermal Dynamics
Thermion Inc
Tianjin Golden Bridge Welding
Materials Group
Tianjin Xinsen Welding Materials
Co Ltd
Tip Tig USA LLC
TJ Snow Co
Tongling Xinxin Welding Materials
Co Ltd
Top Cat Air Tools

WELDING

Trafimet Group S.p.a.
Tregaskiss
Trendex Information Systems Inc
Tri Tool Inc
TRU-FIT Products TRU-Weld
Trystar Inc
Tyrolit Industrial Abrasives
UltraTech International Inc
U-Mark Inc
UNIARC
Uniac Limited
United Abrasives Inc /SAIT
Universal Robots USA Inc.
Uniweld Products Inc
Up In Smoke Welding Apparel Inc
Uweld Technologies Co Ltd
Vantage Capital Equipment LLC
VDM Metals USA LLC
Verone LLC
Victor
Victory CNC Plasma Systems
Vizient Manufacturing Solutions
Inc - A Lincoln Electric
Company
voestalpine Bohler Welding
USA Inc
VSM Abrasives Corp
Walter Surface Technologies
Washington Alloy Co
Wayne Trail Technologies
Weiler Corporation
Weld Engineering Co
Weld Pride USA For Weldbrush
Weld-Aid Products
Weldas Co LLC
Weldcoa
WeldComputer
Welding Alloys USA
Weldlogic Inc
Weldobot Ltd
Weldsale LLC
Welker Engineered Products
Wendt USA LLC
West Chester Protective Gear
West Cryogenics Inc
Western Enterprises
Wire Wizard

WELDING

WireCrafters
Wise Welding Technology &
Equipment Co Ltd
WITT Gas Controls
Wolf Robotics LLC - A Lincoln
Electric Company
Worthington Industries
Wuhan Temo Welding
Consumables Co Ltd
Wuhan Weihei Photoelectric
Co Ltd
Wuxi Yincheng Science &
Technology Co Ltd
Wuzhou Ally Protect Co Ltd
Yaskawa America Inc
Yixing Liangxu Welding
Ceramic Parts Co Ltd
York Portable Machine Tools
Yuyao Tianyi Special Carbon
Fiber Ltd Co
Zhejiang Changzheng Project
Carbon Electrodes Co Ltd
Zhejiang Jingwei Welding &
Cutting Technology Co Ltd
Zhejiang Jinhua Cumet Abrasive
Co Ltd
Zhejiang Juba Welding
Equipments Manufacturing Co
Ltd
Zhengzhou Anxin Abrasives
Zormot International Inc



Position & Charge Contact & Weld Bonding Complete

Insulate Painted Sheet Metal with Permanently Welded Fasteners

Now you can fasten fiberglass or foam insulation to painted metal panels automatically with cupped head weld pins.

- Replaces messy adhesives or expensive internal bracing
- Speed up your insulating process and provide a more reliable insulation fastening system.
- Visit www.gripnail.com for product videos and specifications

GRIPNAIL
Industrial Metal Fasteners

**Product Demonstrations
at FABTECH Booth C19088**

East Providence, R.I. | 800-474-7624



Explore New Products at FABTECH

The following pages in this *New Product Preview* offer a glimpse of what's in store at FABTECH. Find descriptions and images of new machinery, new materials and new processes listed by technology and company name. To view a complete list of all new products offered, click on the Exhibitor Search tab at fabtechexpo.com.

Arc Welding

ABICOR BINZEL

Booth N4704

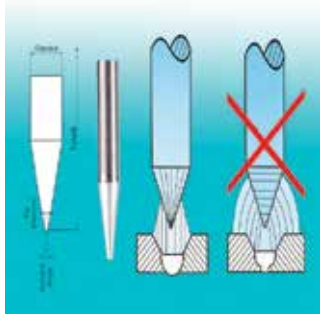
ABIMIG SpinArc

The ABIMIG SpinArc's patented technology uses centrifugal force to produce droplets of molten metal for a more consistent weld. High speed rotation means faster, more productive welding. Perfect for square butt joint, fillet, clad overlay, and vertical down application.

Becken Technology Development Limited

Booth N1620

Pre-Sharpended Thick Tungsten Electrode 1/4" Diameter



The pre-sharpended electrode features 1/4" thick diameter and offers a welding arc with easier starting, higher penetration and a good surface.

ESAB Welding & Cutting Products

Booth N4529

Rebel EM & EMS 215ic



Rebel EM 215ic (ESAB MIG) and Rebel EMS 215ic (ESAB MIG/Stick) join Rebel EMP 215ic (ESAB Multi-Process) welder. All units offer the sMIG (smart MIG) function that automatically fine tunes the arc.

Weld Engineering Co

Booth N5107

FTV-3000 Automatic Flux Transfer Valve



The FTV-3000 Flux Valve automatically transfers recovered submerged arc flux from the recovery hopper to the lower pressure feed tank of its PFR-3000 (or HPFR-3000) pressure feed and recovery system for submerged arc welding. Easy to install on old, or order with new PFR-3000's and HP-FR-3000's.

Wire Wizard

Booth N5216

PowerBall® MIG Welding Guns



Wire Wizard® is proud to introduce its line of high performance semi-automatic & robotic PowerBall® MIG Welding Guns. Its proven consumables design provides maximum conductivity with superior cooling and increased consumable life. Made in USA.

Assembly

CMP Automation

Booth N7025

Metal Component Assembly Automation



CMP designs and builds rotary dial transfer systems to meet demands of high volume production for metal component assembly in various industries. These types of machines provide proven process and assembly benefits that will meet production throughput.

Yoshikawa Iron Works Co Ltd

Booth C20127

Electrical Servo Riveting Machine



The Electrical Servo Riveting Machine can help increase productivity and enhance quality. It enables users to set pressure, stroke, speed, motion and rpms with a touch screen, shorten changeover time with 300 programmable working procedures, rivet with high repeating accuracy, adjust processing conditions during riveting, shorten tact time, trace quality trace with process logs, and connect with the production control system.

Bending/Forming

Burghardt + Schmidt GmbH

Booth C51073

High-Efficiency Leveller For Parts



Schnitz has developed a parts leveler, because the requirements are becoming more demanding on the flatness of sheet metal products. The proven concept of the high-capacity leveler has been consistently applied to this specific field of application. The modular machine series covers the application of 0.4 to about 40mm. All metallic materials, which have a plastic deformability can be levelled. By combining different widths with different directional roll diameters can be found for each directional task the right machine.

Carell Corporation

Booth C37085

T100 DIGI Dual Axis Horizontal Press



The T100 DIGI dual axis horizontal press is equipped with a digital programmer and powered back gauge. This hydraulic press will bend, fold, crimp, punch and form a variety of materials in flat, square, round, tubular and special shapes.

Bending/Forming

CMP Automation

Booth N7025
Servo Nylon Tube Bender
 (SNB100)



The Servo Nylon Tube Bender is a fully flexible nylon tube bending machine capable of bending both prototype and production volume nylon tubes. This patent pending technology can revolutionize how to produce nylon tubes.

Eagle Bending Machines Inc
 Booth C37085
BA CNC LINUX Ubuntu
Software Revolution



Eagle's BA Series CNC Roll Benders now run the LINUX Ubuntu Operating System with enhanced reliability over M.S. DOS. The CNC controls have increased processing speed giving the highest bending precision possible.

Model CP30-MS



The improved Eagle CP30-MS compact, portable Roll Bending Machine for

field or shop use. It has a bright LED digital readout, 18 component universal tooling set, variable rake lateral guides and the patented robust Z block top roll journal design.

DP-7, Control Panel for Roll Benders



Eagle introduces its DP-7 featuring programmable control with 7" HMI touch screen, direct radius display via digital radius gauge (optional), self learning feature and 400 slot memory is available on all Eagle hydraulic roll benders.

HAEUSLER AG Duggingen
 Booth C46085
Plate Roll Line - ROLLmeister
TETRA



HAEUSLER has improved and streamlined its 4-roll plate roll line ROLLmeister TETRA. Also the line was extended with additional smaller size machines.

Innovative Tube Equipment Corp

Booth N6311
Starbend 3-Axis Electric CNC
Bending Machines



In response to the market demands for a versatile, primarily electric and high quality CNC bending machine, ITEC is pleased to introduce its re-envisioned

Starbend 3-axis CNC bending machines and will be exhibiting both a 1.75" and 3" machine at FABTECH 2016.

Kurimoto Ltd

Booth C20127
End Bending Roll Machine with
Horizontal Top Roll



Kurimoto's original bending method achieves higher accuracy and productivity, making it possible to attain precise circular fabrication without press machines.

MetalForming Inc

Booth C35103
Schroeder Powerbend Industrial



Schroeder PowerBend Industrial, introduced in 2014, took the bending market by storm. The new PowerBend Industrial is just as revolutionary. Bi-directional bending capacity up to 1/4". A perfect blend of performance and price point.

SafanDarley BV

Booth C39103
E-Control EC40 Smart



The EC40 Smart is the latest control software innovation from SafanDarley. The EC40 Smart has the functionalities to draw 3D models and read 3D drawings on a mobile device off-line. They can be synchronize with the machine control at any time.

SigmaTEK Systems LLC

Booth C19078
SigmaBEND

SigmaNEST brings many efficiencies used in sheet metal cutting to press brake technology with SigmaBEND - maximizing the speed, quality, and flexibility of bending processes with full 3-D simulation.

Trilogy Machinery Inc

Booth C29079
SWEBEND Plate Bending Rolls



Trilogy Machinery Inc introduces its SWEBEND plate bending rolls including CNC. With the SweBend four-roll double-pinch PB4 machines, plates can be bent on both sides without having to turn the plate. This results in only minimum residual flat ends of 1.5- to 2-times the plate thickness.

Business Services

American Welding Society

Booth C17000
Member Network

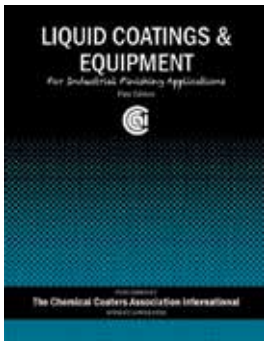


The AWS member network provides members access to networking and educational opportunities, as well as an easy-to-use discussion forum where individuals can connect, engage and share information and best practices with other AWS members. Not only is the network the go-to place to connect with other members, ask advice and share expertise about all things industry related, individuals can even share large files without cluttering their inbox.

Business Services

Chemical Coaters Association International

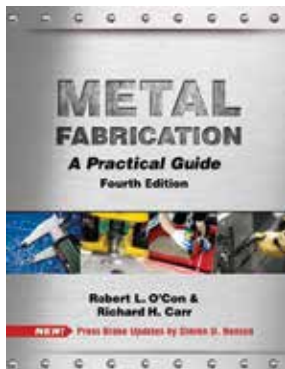
Booth C45043
Training Manual - Liquid Coatings & Equipment



CCAI's newly published Liquid Coatings & Equipment for Industrial Finishing Applications is a training manual that provides innovative and updated information on all essential factors to run an efficient and productive liquid coatings paint line.

Fabricators & Manufacturers Association

Booth C19000
Metal Fabrication: A Practical Guide, 4th Edition



The fourth edition of FMA's bestselling book includes updated and expanded press brake information from industry expert and trainer Steve Benson, plus a new PowerPoint teaching aid.

SME

Booth C22000
Smart Manufacturing Magazine

Smart Manufacturing is the leading business-to-business magazine that focuses on advanced manufacturing technologies and tools that are driven or enhanced by integrated information technology (IT).



FABTECH
 BOOTH
 C29079

The new face of
 Swedish Bending Rolls.

SWEBEND

BENDING ROLLS



Model SB3S-140

Plate Rolls
 Angle Rolls
 We Have Your
Solution.



trilogy
 machinery
 Exclusive Distributor

P | 888-988-7655

inquiry@trilogymachinery.com

TRILOGYMACHINERY.com

Coil Processing

Allor Manufacturing Inc/ Plesh Industries

Booth C48076
Plesh Precision Tapered Backup
Bearings



Tapered backup bearings give direct interchange 2.5" - 12". All of the bearings are sealed or shielded for life, and are heat-treated using bearing-quality steel.

ASKO Inc

Booth C23018
HXT Slitter and Side Trimmer
Knives for AHSS

The laser head moves in the Y-axis via a direct-drive servomechanism for maximum speed and accuracy and is isolated from punching vibration to help maintain beam integrity and cut quality. The highly efficient fiber laser uses approximately a

third of the electricity when compared to a CO2 system.

COE Press Equipment Corporation

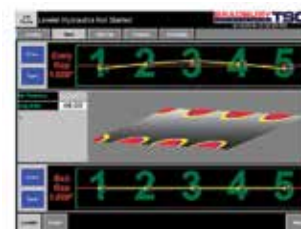
Booth C16020
Enhanced 350 Series
Straightener Design



The enhanced 350 series straightener design features enable processing of a wider range of materials. Improvements include a 30+ percent increase in strength and rigidity as well as work roll penetration, helping achieve the material flatness required to properly feed AHSS.

The Bradbury Group

Booth C44023
Automatic e-Drive® Leveling
System



Bradbury continues to advance the industry by automating their e-Drive® technology. The system reads the shape of the strip, initiating the leveler to self-adjust by using I-unit monitoring to automatically correct for shape changes throughout the coil.

Rubber Blasting Tape

Masking Protection

BT100-SH Series

Caplugs BT100-SH Series is a protective masking tape for use during plastic media blast (PMB), blast (dry strip paint removal) or other shot peen processes. The tape prevents small particles of blast media and other foreign debris from infiltrating and damaging sensitive surfaces, components and control systems.

BT100-SH tape is used in a wide variety of applications including aerospace, industrial and automotive masking. A white crepe release-coated paper liner allows the tape to tear easily by hand.



www.caplugs.com/masking | 1.888.CAPLUGS | sales@caplugs.com

 **caplugs®**
Shercon® masking products

Visit us at FABTECH,
Booth #C51046

FABTECH BISTRO



Reserve a seat at the **FABTECH Bistro** and you will always have a convenient place to eat, meet and network.

The Bistro offers assorted menu options including fresh and healthy lunch options, international cuisine and regional favorites — all at a reasonable price.

Pre-purchase your individual lunch tickets to avoid the lines. Find the daily menu, pricing and order tickets at fabtechbistro.com.



More Technologies. Expert Support. Better Solutions.

High production to hand finishing, our brands are the global leaders in innovative finishing solutions.

One Source.

- Atomization
- Automated Systems
- Infrared & Catalytic Curing
- Electrostatic
- Fluid Handling
- Powder Coating Products & Systems
- Lab & Testing Center
- R&D Resources
- Training

See for yourself
FABTECH 2016 Las Vegas • Booth # C48037

DEVILBISS

devilbiss.com

Ransburg

ransburg.com

ms

msnews.ch/en/

BGK

bgk.com

BINKS

binks.com



Cutting

CS Unitec Inc

Booth N2311
**AutoMAB 350 Portable
 Magnetic Drill**



CS Unitec introduces the AutoMAB 350 portable magnetic drill, which can drill holes up to 1-1/2" diameter and features an automatic feed mechanism with automatic reverse and shut off.

**Koike Aronson Inc/Ransome
 Booth N4720
 Plate-Fab**



The Plate-Fab cutting machine includes a unitized, double-walled downdraft table to isolate sparks & fumes while providing insulation to reduce heat transfer from the torch to machine; configured with one plasma or oxy-fuel torch.

PNC-12 Extreme



The PNC-12 Extreme is an easy-to-use, compact cutting system for use with both plasma and oxy-fuel gas cutting. Its CNC operation is simple and installation time of the system is quick. Pre-installed shape templates are included as well as art files upon request.

Messer Cutting Systems

Booth C33085
MetalMaster 2.0



The MetalMaster 2.0 is a compact 5' x 10' unitized cutting machine and table featuring a PowerMax 125 plasma torch for straight plasma cutting that provides a superior cut performance at a low cost.

MVD Machine Ind

Booth C44101
**iSHEAR B Series - Hydraulic
 Swing Beam Guillotine**



Special design MVD swing beam shears provide up to 25 cutting stroke per minute. Double speed machine concept: FastMode, when cutting thin sheets, can offer up to 50% faster cutting, manufacture in length 3 to 7 meters and capacities 6mm to 25mm.

Fastening & Joining

Master Magnetics

Booth C20046
**Grade 42 Neodymium Magnetic
 Assemblies**



Grade 42, neodymium, rare earth magnetic assemblies with SAE threaded bases or hooks provide a range of mounting and holding options for industrial and manufacturing industries.

Rubber Coated Neodymium Magnetic Assemblies



These Master Magnetics rubber coated magnetic assemblies feature male or female threads in order to accommodate a range of low-profile holding applications.

Finishing

Carlisle Fluid Technologies

Booth C48037
**DeVilbiss AG-360 Automatic
 Spray Gun Series**



The DeVilbiss AG-360 series of automatic spray applicators feature DeVilbiss "QuickClean™" technology and are available in various machine mounting formats to provide a universal finishing solution for all industrial low pressure applications.

Catalytic Combustion Corporation

Booth C45023
Paint Booths



The paint booths by Catalytic Combustion Corporation Finishing Products Division are known for customized design, ease of installation, superior quality components, and exceptional service after the sale.

DCM Tech Inc

Booth C23031
**IG380SD Precision Rotary
 Surface Grinder**



The IG 380SD features a 36" diameter electromagnetic chuck with configuration features of through table vacuum, air or hydraulic clamping. The variable speed 30 HP grinding spindle provides exceptional grinding performance for both conventional and superabrasives and is configured with a sliding door enclosure, air/mist filtration and swarf system with continuous filtering of the coolant.

EXEL North America

Booth C49021
**SAMES InoBell® Powder Bell
 Applicator**



Exel North America offers its InoBell®, a high transfer efficiency applicator that delivers higher first pass transfer efficiency, better uniformity and high finish quality. The InoBell® can be installed on a robotic or reciprocating system for various types or markets.

EXEL North America

Booth C49021
**NANOGUN MV™ Manual
 Electrostatic Low Pressure Sp**



The SAMES NANOGUN MV™ has been designed for spraying 1K, and 2K, solvent and water-based materials with low pressures in a variety of markets such as Aerospace, Agricultural & Construction, Metallic Furniture, Wood and Automotive Industries.

Fluke Process Instruments

Booth C50026
EasyTrack3



Easy to use, accurate and reliable the EasyTrack3 system is designed specifically for the day-to-day needs of every paint/powder coater and supplier alike. Available in a variety of system configurations to suit whatever the coating application demands.

Gema USA Inc

Booth C45013
OptiFlex®2 F Spray



OptiFlex®2 F Spray integrates advanced pump technology, providing excellent coating consistency and quality. OptiFlex®2 F Spray is designed for applications requiring high film builds with precise and constant powder outputs when using long powder hoses.

Nordson Corp

Booth C45037
**OptiMix 1 Plural Component
 Metering System**



The OptiMix plural component system is an electronically controlled proportioning/mixing unit for the processing of solvent and waterbased coatings. It allows rapid change of up to 10 base or catalyst materials in various viscosities and flow rates.

**Spectrum VT Powder
 Feed Center**

The Spectrum VT Power Feed Center provides a return on investment with innovative features that

offer the fastest possible color change, including pump and purge technology to eliminate contamination, a self-contained round hopper and easy to use controller.

"COME AND SEE WHAT I'VE GOT AT FABTECH"



Lisa Johnson
 COLE-TUVE, Inc.
 Metal Fabricating
 Machine Specialist

AFFORDABLE PRODUCTIVITY

We offer a complete line of Metal Fabricating Machines. Our professional sales team can help you find the right machine at the right price.



**BOOTH
 #C51085**

**LARGE, IN-STOCK
 INVENTORY**

(877) 989-0700
 F (410) 933-0600
 sales@coletuve.com
 coletuve.com



COLE-TUVE, INC

**SHEET & PLATE BENDING ROLLS • ANGLE & SHAPE BENDING ROLLS
 FLANGING MACHINES • PRESS BRAKES • PRESSES • TRIM/BEAD MACHINES**

Exclusive North
 American Distributor
 for 23 Years

sahinler

Finishing

Rohner

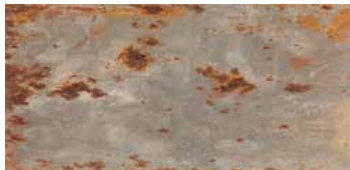
Booth C50053
In-Line Process (Conveyorized)
Powder Booth



Rohner in-line process powder booths are designed with optimal airflow for powder containment, application efficiency and a perfect solution for spray-to-waste/reclaim cartridge collector efficiency to your coating process.

Tower Oil & Technology Co

Booth C18025
Rustbeat 66-SRP



VOC-Free, synthetic, biodegradable, rust preventive. Excellent protection in humid environments for extended storage. Dries quickly leaving a thin, water displacing, dry to the touch film. Spray, wipe, or dip methods. Easily removed.

Weiler Corporation

Booth N3704
Weiler Wolverine Flap Discs



Weiler Wolverine flap discs are designed to deliver fast material removal and consistent performance at a great value. The improved design provides up to 25% more life over the previous Vortec Pro line.

Wendt USA LLC

Booth N4306
Ceramic Flap Wheel with 5/8-11
Threaded Arbor

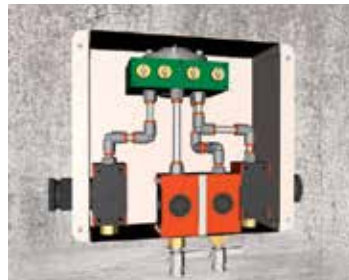


Wendt USA LLC introduces its ceramic flap wheel with 5/8-11 threaded arbor, offering the ability to grind and finish using a normal angle grinder. This design allows users to achieve the linear finish needed on stainless steel tanks, food service equipment and architectural parts.

Gases & Gas Equipment

McDantim Inc

Booth N4514
Trumix® TM2B450



The TM2B450 provides two different blends of a two-component mixture. The TM2B450 can deliver 450 scfh of both blends at the same time and maintain +/- 10% accuracy.

Trumix® TMA950-3



McDantim's TMA950-3 gas blending system can provide up to 950 scfh of a three-component gas blend. Accurate mixtures of any three of the following gases; Ar, N2, CO2, O2, He, or H2 can be produced on-site in the exact ratios a process requires.

Trumix® TM4000-2



McDantim Inc's most complete and versatile package the Trumix® TM4000-2 (standard or laser model) gas blending system can provide up to 4000 scfh of a two-component gas blend.

Weldcoa

Booth N4108
Flexible Teflon Lined Hoses



Flexible Teflon lined hoses specifically for gas industry applications. Proudly made in the USA.

Inspection & Testing

Gentec Electro-Optics

Booth C19105
Pronto-250 - Portable 250 W
Power Meter



The Pronto-250 is a portable laser power meter with an integrated touch-screen monitor presenting an intuitive user-interface that can measure up to 250 W, thanks to an all-metal casing and strong absorber.

Pronto-Si - Portable Silicon Detector



The Pronto-Si is a handheld laser power meter with an integrated touch-screen monitor and a Silicon sensor. This handy tool presents a slide-in attenuator to extend the measurement range up to 800 mW and flips close for better protection during transport.

HP Series - High Power Detectors



The HP are High Power Detectors with water cooling that can read up to 12,000 W of continuous power with a noise level of only a few Watts. They feature a regular DB-15 connector to connect to a monitor and a USB output for direct measurements on a PC.

GoMeasure3D

Booth C15094
HDI Advance R4x 3D Scanner



The HDI Advance R4x 3D scanner is ideal for metrology applications and demanding projects that require high accuracy and detailed resolution scan data with repeatable results.

GoMeasure3D

Booth C15094
MikroCAD 3D Scanner



MikroCAD is a surface metrology system that generates 3D surface scans with microscopic level of detail. It inspects small volume measurement with sub-micron resolution and accuracy.

**KARBON Optical Coordinate
 Measuring Machine (CMM)**



KARBON is an optical CMM for engineers and inspectors in various manufacturing industries. It offers user-friendly, repeatable and accurate measurements using a contact probe.

Olympus

Booth N3715
**Vanta Handheld XRF:
 Redefining Rugged**



Vanta handheld XRF analyzers redefine rugged durability. IP65-rated and drop-tested to meet MIL-STD 810 specifications, these rugged, powerful instruments provide rapid, accurate, laboratory-quality element analysis and alloy identification in the field.

IPLEX NX

Olympus' IPLEX NX combines the high-quality images available in a videoscope with an intuitive user interface, ergonomic design, and durability for efficient inspections in any environment.

**Job Shop/Contract
 Manufacturing**

OMCO

Booth C19047
Custom Welded Tubes



OMCO offers contract manufacturing of custom welded tubes. Highly automated equipment is a cost-efficient alternative to highly post-processed standard tubes. Material thickness up to 0.250". 150 kW high frequency welder with integrated eddy current weld monitor.

FABTECH
 BOOTH
 C29079

SUNRISE
 IRONWORKERS
 CNC SYSTEMS

CNC
 Ironworkers
 are the
 SOLUTION.



Model APS
 Fully-Auto Punch and Shear



50-220 Tons
 Multi-Operator
 Multi-Station
 IN-STOCK NOW!

IW-88S
 Dual-Cylinder



trilogy
 machinery

P | 888-988-7655

inquiry@trilogymachinery.com
TRILOGYMACHINERY.com

Lasers

Amada America Inc

Booth C29037
LCG 3015 AJ



Demonstrating the expanded range of Amada's proven fiber laser technology, the LCG 3015 AJ will exhibit 9kW of fiber laser cutting power. This high-capacity fiber laser allows fabricators to process thin-to-thick materials at unprecedented levels of efficiency.

Bystronic Inc

Booth C35069
ByStar Fiber Laser Cutting Machine



The high performance ByStar Fiber is designed from the ground up to meet the demands from high-speed fiber laser cutting as well as cutting capabilities into the thick plate range.

BySmart Fiber Laser Cutting Machine



Bridging performance with lower investment costs. The BySmart Fiber 3015 laser cutting machine is designed for users who are looking for quality machine performance at a lower investment cost.

Cincinnati Inc

Booth C31102
CL-960 Series Fiber Laser System



Cincinnati introduces its CL-960, 6,000W fiber laser system featuring: 5'x10' dual pallets, LaserMech Fiber-cut laser cutting head, linear drive motors, HMI control, nesting software, automation interface and dynamic power control.

Durma USA

Booth C29068
Fiber Lasers



With their modular construction concept Durma fiber lasers are now offered in large formats up to 60' lengths and 8' widths and power sources from 1kw to 8kw. Machines are available with and without linear drive systems as well as automation.

Hako CNC Machine/Accurl (Anhui) Manufactory Co Ltd
Booth C44079
CNC Laser Cutting Machine



The CNC Laser Cutting Machine by Hako adopts an imported IPG Fiber laser source (500W,1KW,2KW) and features a dual driving ball screw moving system, fixed light-route with gantry style design and a close-loop control with linear scale to make the cutting quality perfectly match with the design.

LaserStar Technologies Corp

Booth N5729
FiberCube Laser Engraving System



The FiberCube Laser Engraving System is compact, turnkey & offers a non-contact, abrasion-resistant, permanent laser mark, engraving or cut onto most materials. Made in USA.

iWeld Benchtop Laser Welding System



Easy to use, simple to maintain and incredibly powerful, the 990 Series iWeld Benchtop Laser Welding System fits neatly into any work environment. iWeld is the highest peak powered laser welding machine in its class.

Industrial Laser Welding Systems



LaserStar's 1900 Series Industrial Laser Welding Systems are ideal for a wide range of metal joining, complex assembly, automation and repair applications for the industrial marketplace.

Lumentum

Booth C16115
6.3 kW Fiber Laser Engine, 1080 nm CORELIGHT YLE 6



Lumentum introduces its CORELIGHT series 6.3 kW fiber laser engines, based on highly advanced, compact 2.1 kW ytterbium fiber laser modules.

2.1 kW Fiber Laser Engine, 1080 nm CORELIGHT YLE 2



The CORELIGHT series 2.1 kW fiber laser engines is based on highly advanced, compact 2.1 kW ytterbium fiber laser modules.

4.2 kW Fiber Laser Engine, 1080 nm CORELIGHT YLE 4



Lumentum offers its CORELIGHT series 4.2 kW fiber laser engines, based on highly advanced, compact 2.1 kW ytterbium fiber laser modules.

Mazak Optonics Corp

Booth C31068
Versatile Compact Laser- Tube
100



The VCL-T100 is an affordable tube production laser that utilizes direct diode laser technology, delivering higher efficiency and reliability than other solid state laser systems.

MVD Machine Ind

Booth C44101
iLASER - Fiber Laser



Flying optics from 1KW up to 6 KW with machine sizes of 1500mm x 3000mm up to 2000mm x 6000mm and variable size manufacturing. iLaser is designed with high precision criterias, rigid and powerfully body that allows high cutting speed and accelerations.

Richardson Electronics Ltd

Booth C23078
Round Bellows



Richardson Electronics expands its offering of round bellows for state-of-the-art CO2 lasers. The patented design allows for peak performance on high speed lasers. These bellows are suitable for use in laser machines from TRUMPF®.

REdi 4.0 Remote Diagnostics

Richardson Electronics introduces a remote diagnostics system, which monitors certain functionality of laser equipment by analyzing data collected from the machine. REdi 4.0 allows users to predict machine failures and avoid costly downtime.

Dust Filter

Richardson Electronics has expanded their line of replacement dust collection filters. The filters meet and or exceed OEM specifications and are suitable for use in laser machines from Bystronic® and TRUMPF®.

New

Introducing the World's Most Advanced Split-Frame Machining System



TRIMAX™

**Awarded Two Patents Resulting In
Maximum SAFETY,
PERFORMANCE and PRECISION**

"A truly remarkable achievement. The state-of-the-art recirculating bearing and "zero pinch-point" internal tripper design is a game-changer in terms of operator safety, stability and outstanding cutting results."

See it run at FABTECH Booth #N5916

TRI TOOL
BUILDING PERFORMANCE

+1 916-288-6100 • (US) 888-345-5015 • www.tritool.com

A mobile tool chest on wheels with a wooden top and a red handle. The chest is black with red and white stripes on the drawers. The top drawer is open, showing tools inside. The chest has a large black door on the left side and is mounted on four black wheels.



InfoSight Corporation
"We BARCODE Difficult Stuff"

SHARPEN YOUR EDGE

November 16-18, 2016 Las Vegas, NV

FABTECH

BOOTH C24042



Contact us globally at:



www.infosight.com
www.infosight.ae
www.infosight.es
www.infosight.eu/de
www.infosight.it
www.infosight.ru

UNCAGED & ATTACKING METAL



NEW: BONDED ABRASIVE WHEELS

Weiler's Cutting and Grinding wheels get the most demanding jobs done right, and done fast. Our high quality lineup helps Welding & Fabrication professionals select the best solution for the toughest jobs. Whether you're looking for serious stock removal, beveling, grinding, notching, facing, cutting or edge softening, Weiler will get it done.

Visit us at FABTECH and Request
a FREE Sample Attack Pack.

Booth #N3704

Maintenance & Repair

Imperial Systems Inc

Booth N1825
ServiceMAXX



Imperial Systems Inc introduces its dust collection equipment service and preventative maintenance. Dust collectors are designed to provide many years of air filtration and air pollution control. Cleaner air means a healthier workplace environment decreasing employee and production down time.

Material Handling/Marking

InfoSight Corp

Booth C24042
CodeTags™



CodeTags™ are preprinted metal tags with 1-D and 2-D barcodes and a unique ID number for tracking pieces or assets. Available in KettleTag®PLUS material for galvanizing applications or ToughTag™ for asset tracking. Perfect low cost tracking system.

LA-CO Industries Inc

Booth N4511
Quik Stik® Fluorescent



Markal® Quik Stik® solid paint markers in a twist-up holder are now available

in fluorescent yellow, green, orange and pink. Joining the family of eight other colors, the fast-drying, gel-based paint marks on smooth or rough surfaces up to 400°F.

Welker Engineered Products

Booth N1731
PCY Pin Clamp



Dual-finger pin clamp provides positive part location and clamping, up to 14mm part thickness. Ideal for flanged holes, end effector applications, and material handling. Retract option allows pin to retract below the backup for easy part release.

Other Machinery/Equipment/Parts/Products

Boschert Precision Machinery Inc

Booth C39079
CS Copper Bar Shear



Shearing copper and aluminum bus bar with excellent edge quality is easy and affordable. The CS shear from Boschert is available with or without radius cutters for rounding corners. Includes DROs and back gauge.

Gripnail Fastening Systems

Booth C19088
TackMount



Quickly and permanently fasten cable tie mounts to metal without drilling or any other surface preparation. Just place the TackMount of the tip of a Gripnail air tool, position and impact directly into base metal such as steel, aluminum and cast iron.

Gudel Inc

Booth N5524
TrackMotion TMF-5 for Heavy Weight Robots



The TMF-5 is the only standard linear motion product available on the market that can move an articulated robot with a payload over six metric tons. The TMF-5 is designed for heavy weight robots. Available in lengths from 4 meters to over 100 meters.

Hydraulic as

Booth C16056
Hydraulic Upsetting Forging Press



The Hydraulic Upsetting Forging Press (USP) offers great flexibility and extreme precision. The two side cylinders are servo-controlled and have a precision better than +/- 0.1 mm, even though they move with a speed of up to 350 mm per second.

Nederman LLC

Booth N2734
Filtac Oil Mist Filter



Nederman introduces Nederman Filtac, a range of products for efficient oil mist filtration based on the patent-pending FibreDrain™ technology, specially designed for continuous operation.

Saar Hartmetall USA LLC

Booth N6105
SMA30E Electric Portable Beveling Tool



Saar-Hartmetall USA introduces its SMA30E electric hand-held beveling tool that features a more powerful motor and new milling head design. The SMA30E is a compliment tool to the complete line of electric and pneumatic portable beveling tools.

MMB 500 Stationary Beveling Machine



The MMB 500 is suitable for processing small, medium and large aluminum, steel, and stainless steel plate and bar stock workpieces and is designed for hands-free operation and is capable of providing a variety of bevel angles between 30° and 60°.

TRUMPF Inc

Booth C35041
TruPrint 1000



The TruPrint 1000 for additive manufacturing enables users to build metal components, layer by layer, using the process of laser metal fusion (LMF).

Versatility Professional Tool Storage

Booth C17034
iTool Visual Press Brake Cabinet (All Tool Styles)



Versatility's iTool® Visual Press Brake Cabinet features polycarbonate see-thru door, LED lighted interior and configurable drawers with flip down drawer fronts and lockouts.

Plate & Structural Fabricating

Carell Corporation

Booth C37085
MRM-H , Hydraulic Initial Pinch Plate Rolls

NEW! MRM H Series



Carell introduces the MRM-H. All sizes have powered central rolls rotation, hydraulic side & pinch roll adjustment, 2 LED readouts, hydraulic drop-end, hardened rolls and cone rolling device, all standard.

JOIN THE 4TH

100% of the proceeds go to scholarship and other education support programs of AWS, FMA, PMA, SME, and CCAI.

**RUN4
MFG5K**
 Charity Run • Las Vegas, NV • Nov. 18, 2016

Registration Opens: 6:30 AM | **Event Start:** 7:00 AM
 Cost: \$35.00, After Nov. 4 \$50.00



REGISTER TODAY!
fabtechexpo.com/run4mfg

Nederman

Nederman Filtac Oil Mist Filters
 Efficiency Powered to Infinity

Nederman Filtac oil mist filtration solutions are designed with our unique FibreDrain™ technology ensuring superior separation performance with:

- Continuous operation
- Long filter media life
- Lower overall cost
- Peace of mind

Visit us at booth N2734



www.nederman.com

Plate & Structural Fabricating

Hydraulic as

Booth C16056
Heat Exchange Plate System



Hydraulic offers its press line for stamped and embossed plate production, a complete production system up to 1 m² (11 ft²) plates, up to 900 pcs/hour and quick die change.

ROUND O

Booth C33103
R-3



ROUND O introduces its section bender. The R-3 is a top precision machine in the field of steel deformation.

Press Brakes

Amada America Inc

Booth C29037
HG 2204 ATC



Amada engineered the HG 2204 ATC as an ideal solution for variable lot sizes and complex tool layouts. A patented Automatic Tool Changer (ATC) loads the most complex tool layout within a few minutes and allows operators of varied experience levels to efficiently utilize this bending system. The HG's 13-ft. bed length facilitates multi-stage bending operations and

supports bend lengths up to 161.4". Other standard features on the HG 2204 ATC include an AMNC 3i touchscreen control, an integrated bend sensor that ensures consistent bend angles, and an energy-efficient servo/hydraulic drive system.

Bystronic Inc

Booth C35069
Xpert 40 Press Brake



Bystronic's Xpert 40 press brake is a compact, ultra-high-speed, ergonomic press brake, moveable on demand to where you need it, when you need it. The Xpert 40 is ideal when space is limited and capacities vary.

Cincinnati Inc

Booth C31102
GOFORM Electric Press Brake



Cincinnati introduces the GOFORM, its first portable, electric press brake.

Hako CNC Machine/Accurl (Anhui) Manufactory Co Ltd

Booth C44079
CNC Press Brake



CNC press brake with DA66t control system, 8+1 axis, DSP laser protection.

JMT USA

Booth C39047
Eco Bend Electric Press Brakes



JMT introduces its fast, accurate and efficient (up to 75% energy savings) Eco Bend electric press brakes. They run quiet, draw very little power while idle and have a compact footprint. 4' x 28-ton to 10' x 112-ton available with optional ergonomic packages.

MVD Machine Ind

Booth C44101
iBEND C Series Hydraulic Press Brake



The iBEND C Series features 310mm stroke and 500mm throat maximum machine performance and high bending accuracy provided by synchronized hydraulic cylinders, CNC-controlled, Germany hydraulic block, proportional valves and high quality Givi or Heidenhain optic scales.

Salvagnini America Inc

Booth C25047
P1 Panel Bender



The all-electric Salvagnini P1 panel bender for 2016 is a smart, adaptive machine newly redesigned with Automatic Blankholder Adjustment (ABA) for flexible kit and single piece part production. The P1 will be on display at FABTECH 2016.

TRUMPF Inc

Booth C35041
TruBend 5130



The redesigned TruBend 5130 precision press brake will be on display at FABTECH. Its Servo Drive 4-cylinder drive technology is highly dynamic and delivers significantly more productivity than a conventional drive.

Punching

Amada America Inc

Booth C29037
LC 2515 C1 AJ



The LC 2515 C1 AJ provides sheet metal fabricators maximum production flexibility by integrating Amada's innovative Multi-Purpose Turret (MPT) and 2kW fiber laser technology. Processes such as tapping, forming, and laser cutting can all be performed on this innovative system to maximize part accuracy and machine productivity.

Murata Machinery USA Inc

Booth C31085
M2044TS-S



The world's first electric servo-driven turret punch press has evolved to bring the ultimate in control, precision and reliability, providing an economical solution to parts production requiring punching, forming, tapping and deburring.

Resistance Welding

Dengensha America Corp

Booth N5922
Flexwave



The Flexwave welder is a combination of an advanced Capacitor Discharge Welder (CDW) and a 1500Hz Bipolar Medium Frequency Converter (MFC).

Upper Electrode Feeder



With Dengensha's upper electrode weld nut feeding, users can reduce weld cycle times and achieve faster feed rates. A patented linkage design with fewer moving parts provides performance that is more reliable.

Capacitor Discharge Welder



Dengensha America's compact NDZ Capacitor Discharge Welder offers unique selectable current control mode and intuitive control setup.

WeldComputer

Booth N2336
Touch-Screen User Interface Controls



The industry's highest performing controls are now more intuitive with a new touch-screen option that offers all the control monitoring functions WeldComputer is known for, via user-friendly, drop-down menus on a touch screen.

FABTECH® EDUCATION PROGRAM



With more than 100 targeted technical, operational, economic, and managerial sessions, you'll discover the solutions you need to advance your career and business.

REGISTER TODAY for sessions at fabtechexpo.com/edu

**See the schedule-at-a-glance on pages 36-38.*

Three Important Reasons To Visit Booth #N5922

1 Our Upper Electrode Feeder Reduces Cycle Times. See a Live Demo!

- Simultaneous workpiece movement and nut feeding.
- Accurate and secure nut positioning.
- For 6, 8 and 10 millimeter square nuts.
- Faster speed rate.



3 Check Out Our Newest & Most Compact Capacitor Discharge Welder Yet

- Selectable current modes let you fine-tune weld quality.
- Weld current as high as 50kA, but only requires a small 6kVA supply.
- High current in short bursts allows minimum heat transfer and workpiece distortion.
- Smaller footprint. Cost-efficient compact design.
- Ideal for welding small projection parts on high-strength steel.



2 Minimize Heat Transfer & Distortion With Breakthrough Flexwave Technology. See a Live Demo!

- Direct configuration of weld current values makes it easy to fine-tune weld quality.
- Provides energy savings and shortens cycle times.
- High current in short bursts optimizes weld nugget quality, minimizing heat transfer and workpiece distortion.
- Combination of capacitor discharge welder and bipolar medium frequency converter.
- Maximizes waveform flexibility.



Call: 440-439-8081 • Ask for Steve Andrassy • Web: dengensha.com



Engineering Resistance Welding Value★

We plan to showcase even more new products at Fabtech. Be sure to put the Dengensha booth on your priority list!

Safety & Environmental

ESTA Extraction USA LP

Booth N5300
DUSTOMAT 4 Mobile Dust Extractor



ESTA's mobile devices are excellent for direct extraction at individual or multiple processing machines for metal dusts and shavings. Optionally, extraction hoods, extraction arms and smaller pipe systems can be attached.

OILMAC Oil Mist Separators



The oil mist separators from ESTA are especially designed for the metal industry. They effectively extract oil and emulsion mist that arises when cooling lubricant is used during lathing, milling, drilling or grinding metal.

SRF 15



Mobile welding fume filters from ESTA can be used for a wide range of applications.

Imperial Systems Inc

Booth N1825
Explosion Isolation Valve



Imperial Systems Inc introduces a fire safety device used in conjunction with a dust collector to prevent fire or explosive material from re-entering a manufacturing facility.

Heavy Duty and Low Profile Airlocks



Imperial Systems Inc offers its heavy duty and low profile Airlock, engineered to outlast all other airlocks. The unit offers the tightest flexible seal, allowing larger particles to easily pass through the valve while maintaining the air seal.

Lasermet Inc

Booth N1126
Laser Safety Cabin - Laser Castle G2



Laser Castle G2 is the second generation modular, rapid-build laser safety cabin, certified to ANSI Z136.1 and IEC 60825-1 fitted with interlock control, LED signs, active guarding, CCTV or active windows, auto-doors and fume extraction.



StrongHandTools

RHINO CART

MOBILE FIXTURING STATION

Charge right through your next fab project!

It's a jungle out there... be ready to handle any build, repair, or assembly job with the New Rhino Cart *Mobile Fixturing Station*. Quickly clamp and fixture at any point on the surface, store all your tools, and charge right through your projects!

See our Intro Offers at: Rhino-Cart.com/promo

sales@stronghandtools.com | www.rhino-cart.com



ALL-IN-ONE

Table + Fixturing Kit

FABTECH

Visit us at FABTECH
 Booth# N2324



Lasermet Inc

Booth N1126
Laser Jailer - Active Laser Guarding



The patented Active Laser Guarding System is a failsafe, modular safety control system that switches off a multi-kW laser within 50ms if the beam strikes a cabin wall. Now available with new polarflex detector panels.

Laser Interlock Controller

Lasermet introduces its Laser Interlock Controller ICS-6-OEM, ideal for integration with laser robot welding systems

within a laser safety cabin. Connected to interlock switches it enables the laser to be fired only under safe conditions.

Software & Machine Controls**Bosch Rexroth Corp**

Booth C24080
IndraMotion MTX - CNC platform



Rexroth's IndraMotion MTX CNC systems can control up to 250 axes of electric and/or hydraulic motion across 60 independent NC channels, depending on hardware, and feature super fast execution speeds, safety on board technology and 5-axis interpolation.

Burghardt + Schmidt GmbH

Booth C51073
EP300_250mm



The burr height measuring system EP300 offers an optimal quality control of slitting processes of thin metal strips. Slitting samples with maximum length of 250mm are measured quickly and without complex preparation. The system determines burr, cutting edge curvature and edge drop of the slitting samples. The quality standards are controlled with an accuracy of 1 µm.

EP300_1350mm

EP300_1350mm Burr height measuring system for optimal quality control of slitting processes.

BOOTH
#C21100

CMMS App

- Camera integration
- QR code scanning
- Geo-tagging
- Offline capabilities
- Labor timers

2015 Plant Engineering PRODUCT of the YEAR Gold Award

Maintenance Software for Manufacturing

Catch a demo of the modern Bigfoot CMMS and its new mobile app to access your work orders, assets, PMs, Parts, and EHS/Safety across all platforms.

You're just a swipe away.



FABTECH Booth #C21100
 866-858-7800 ext. 82
 sales@bigfootcmms.com
 www.bigfootcmms.com



Software & Machine Controls

FlashCut CNC

Booth N4136
FlashCut Titanium Series CNC Control Console



All-in-one slim ergonomic industrial CNC control console with sealed steel construction. Additional features include an 8A advanced microstepping or 25A peak digital PID servo for up to 6 axes of motion and pedestal mounting with bottom access to all connections.

Logopress3/Accurate Die Design Software Inc.

Booth C15031
Transfer Die Simulation

Logopress3 now allows for realistic simulation and interference detection with various press types including servo and link motion presses.

OMAX Corp

Booth C27047
Digital Dashboard



OMAX introduces its digital customer care portal to provide customers with an all-encompassing and convenient digital support experience. The digital dashboard will help operators and owners get the most out of their waterjet cutting systems around the clock.

SigmaTEK Systems LLC

Booth C19078
SigmaMRP

SigmaMRP is a manufacturing resource planning (MRP) system that manages transactions and communication with customers, suppliers and more.

Smartware Group

Booth C21100
Bigfoot CMMS Mobile App



Smartware Group, Inc. introduces its first native mobile application for Bigfoot CMMS, the cloud-based asset and equipment management software used by maintenance teams worldwide. The mobile EAM app offers a robust suite of capabilities for maintenance professionals on the go and is included with a Bigfoot CMMS Enterprise+ subscription, for both existing and future users.

TESAR S.p.A.

Booth C14115
I4Suite



I4Suite is the simple, intuitive and automatic solutions family proposed by TESAR® for production & supply chain management. I4Suite can be implemented both in new plants and in retrofitting scenario. I4Suite is scalable, modular and integrable with the most important ERP available on the market.

I4APS

4APS is the software for industrial production planning and finite capacity scheduling suitable for all industry sectors and applicable to companies of all sizes. I4APS optimizes the men/machines load, efficiency and productivity of the whole company, considering priority orders, deadlines, resources, and so on. Data redundancy can be avoided thanks to possibility of DB set sharing with the whole I4Suite.

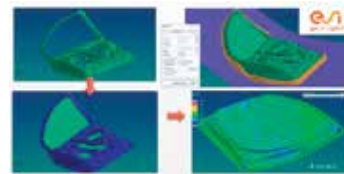
I4Production

I4Production is the software for data collection, production monitoring and management. I4Production allows the control and management of the manufacturing process, considering both manual tasks statements and automatic monitoring of production parameters (of any machinery/plant types). Direct link to the production machines, allows I4Production to collect production data in real time. Shop Floor Interface allows operators to interact with production and machines.

Stamping

ESI North America

Booth C15105
Die Starter



Die Starter enables die face designers to reduce drastically the number of iterations needed to establish a feasible tool design. This solution automatically creates the first complete die face including binder, addendum surfaces and bead center-line.

Tool & Die

Bohler Uddeholm Corp

Booth C18047
Vanadis 8 SuperClean



The Vanadis 8 SuperClean offers a grade that sets a new standard for PM Tool Steel. The combination of extremely high wear and chipping resistance paired with improved machining properties raise production rates and reduce costs.

Green Valley Manufacturing Inc

Booth C46095
140,000 lb. Capacity Free Range Transporter



The Titan 153371 is a free range industrial transporter with a capacity of 140,000 lbs. It features 48 VDC power, a wireless remote control, poly wheels, collision avoidance sensors, E-stop bumpers, and visual and audible alarms.

Tooling

Strong Hand Tools

Booth N2324
Big Mouth Pliers



Strong Grip® big mouth pliers have 4-adjustment slots so you can instantly adjust the jaws for holding capacities from 1/4" to 3". Use the crank handle to quickly open and close the plier jaws and increase torque, even with the pliers locked in position.

BuildPro® Tool Cart



The BuildPro® Tool Cart is the ideal way to organize, inventory, and keep the clamps and components in the BuildPro® Modular Fixturing Kits within easy reach for faster fixture setup and tear down.

Strong Hand Tools

Booth N2324
 Inside / Outside Angle Magnets



The Inside /Outside Angle Magnets let users old stock from the outside, leaving clearance for inside welds, or hold stock from the inside for outside welds. Hold and position sheet metal, round pipes, square, angled or flat stock.

ESCO Tool Co

Booth C22035
 Portable Tube Beveler



The ESCO Mongoose MILLHOG® battery powered beveling tool is a truly portable tube beveling tool and is suited for 5/8" I.D. to 3" O.D. tubes. This powerful tool provides chatter-free operation without cutting oils for up to 60 minutes before recharging.

Lillbacka USA

Booth N6700
 Finn-Power King Crimper 2000



Finn-Power King Crimper with 2000 tn force has capacity to crimp 28" diameter. Finn-Power King crimper series in-

cludes 800, 1200 and 2000 tn models which are offered with the latest control features and options.

Tube & Pipe Fabricating or Welding

Carell Corporation

Booth C37085
 ETM-90HD Heavy Duty 3" Pipe
 Bending Machine



The ETM-90HD rotary pipe & tube bend-er and tooling are constructed from solid steel plate & billet with a capacity of 3" pipe and 3.5"OD tubing. Digital programming offers 40 programs of 5 bends each. High quality bends are produced swiftly without using a mandrel.

E.H. Wachs

Booth N4029
 DynaPrep MDSF Flange Facing
 Modules



The Flange Facing modules adapt users DynaPrep MDSF pipe cutting machine into a flange facer. The FFC (Cantilever) module machines record groove finishes on raised face flanges, the FFR (Rail) multi-axial module machines complex RTJ ring groves and tapers.

FACING GOES MODULAR

with **DynaPrep MDSF**

E.H. WACHS NEW FLANGE FACING MODULES expand the capabilities of our DynaPrep MDSF Modular Design Split Frame machining system in flange facing, grooving and tapering.

The FFC (Cantilever) module is designed to quickly machine record groove finishes on raised face flanges.

The FFR (Rail) module is adjustable in multiple axes to machine more complex RTJ ring groves and tapers.

See them at the E.H. Wachs exhibit

Booth N4029



FFC (Cantilever) module



FFR (Rail) module



E.H. WACHS®

A Division of ITW

Superior Equipment. Complete Support.™

To Learn More Contact Your
 E.H. Wachs Representative

**CALL 1.800.323.8185
 OR VISIT EHWACHS.COM**

Tube & Pipe Fabricating or Welding

Lillbacka USA

Booth N6700
Management Software
Automated Crimping Cell



Finn-Power watchman software provides features for an automated Finn-Power crimping cell. Crimping cell TC120 with full automatic die changer system and optional feeder/part stacker robot provides periods of unmanned production with constant rate.

Finn-Power NMS Series Crimpers



Energy efficient NMS series save energy and reduce hydraulic oil wear thus increasing the oil life time and saving on the PM expenses. All savings reduce the operating cost of the machine and bringing down the cost/crimp.

SigmaTEK Systems LLC

Booth C19078
SigmaTUBE

SigmaTUBE is a complete tube and pipe cutting software supporting round, square, rectangular, or triangular tube/pipe along with structural material such as I-beams, H-beams, C-channel, angle iron, and other user-defined shapes.

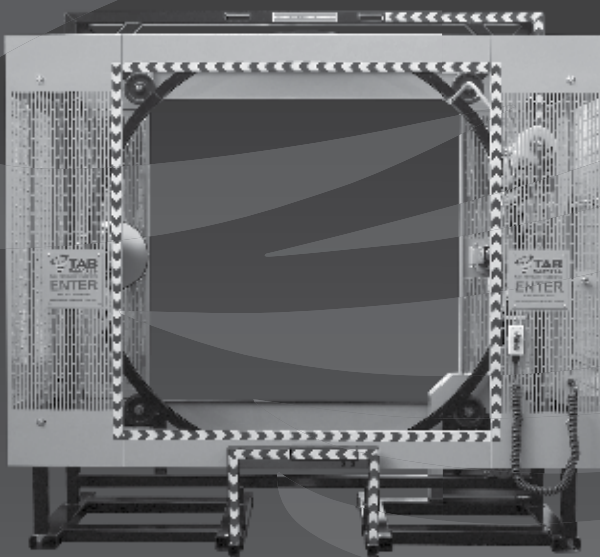
Tri Tool Inc

Booth N5916
TRIMAX™ Machining Systems



The revolutionary design of the TRIMAX machining system truly delivers maximum safety, performance and precision. Winner of three U.S. Patents, it provides the ultimate in speed, strength and stability for all demanding machining applications.

TAB WRAPPER TORNADO



- Significantly improves pack-to-shipment performance while minimizing labor requirements
- Reduces product damage
- Stretch-wraps most loads in one minute or less
- A quality machine for an economical price



Made in USA
Patent Pending



TAB Industries, LLC
See Us In
Booth #C19028

WWW.TABWRAPPER.COM

610-921-0012

Tube & Pipe Producing

ASMAG USA Inc

Booth N6715
Automated Stacking, Bundling,
and Banding



ASMAG and SEUTHE provide stacking, bundling, and banding equipment as stand-alone systems or in-line with its mills, draw benches, straighteners, and cutting equipment.

Waterjet

Jet Edge

Booth C25085

**Permalign® V-Series
Mini Hopper**



Jet Edge's Permalign® V-Series Mini Hopper allows waterjet operators to easily make adjustments to abrasive flow, minimizing abrasive consumption. Its water resistant design helps prevent abrasive clogs and does not require an enclosure.

EDGE X-5 5-Axis Waterjet System



Built for 24/7 industrial use, Jet Edge's latest generation of EDGE X-5 5-Axis waterjet systems lead the industry in precision, accuracy and dependability.

KMT Waterjet Systems Inc

Booth C25103

PRO-III 90,000psi Pumps



KMT introduces the MAX cut speed of 90,000psi PRO-III pumps. Offered in 60hp, it increases cutting 50-70% & 125hp dual head cuts in half the time. Patented intensifier for longer lifetime of the cylinder body/seal head connection and increases seal life.

Welding Consumables

Becken Technology Development Limited

Booth N1620



Unique Super Anti wear and super-thick brazed Clad Plate contains the steel

base and the brazed clad layer of Nickel matrix with Cast Tungsten Carbide hard particles, without cracks. The thickness can be more than 30mm, which is a few times anti wear than anormal wear plate. It can be easily assembled by welding.

Visit Us At
Booth C25095

LISSMAC

METAL PROCESSING

**BOTH SIDES IN A SINGLE PASS –
GET THE LISSMAC EDGE – THE ORIGINAL**

Oxide Removal · Edge Rounding · Deburring
Deslagging · Finishing

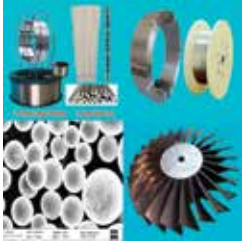


LISSMAC Corporation
356 Hudson River Road, Waterford
NY 12188, USA
phone (+1) 518 326 9094
fax (+1) 518 326 9098
www.lissmac-usa.com

Welding Consumables

Becken Technology Development Limited

Booth N1620
Quality Titanium Wires and Powders



BTD top quality Titanium Wires and Rods, 0.1-5.0mm for Welding and 3D printing are shaving spooled shiny wire with low impurity and level winding, as well as superior strength and elongation. The Titanium powders and Nickel alloy powders are highly spherical with excellent flowability. There are few satellite and porosity powders. The oxygen and other contaminants are very low. In addition, the particle size distribution is tailorable.

Continental Abrasives

Booth N5016
Ulticut Cutting and Grinding Wheels



Ulticut wheels made with Shieldtech grain provide increased life, cooler cutting & grinding and a better finish than the other premium product on the market. Ulticut wheels are perfect for both non-ferrous and ferrous metal like stainless steel.

COR-MET INC

Booth N2018
QWP Flux Coated Stainless Steel Tig Rod



Cor-Met Inc. offers a stainless steel TIG wire with a flux coating for welding root passes and eliminates the need for backing or purging. Available grades: 308L, 309L, 316L, 2209, 625, 82, 80S-B6, 80S, B8. Plus special request alloys.

Weiler Corporation

Booth N3704
Tiger High Performance Bonded Wheels



Weiler High Performance Tiger cutting, grinding, and combo wheels cut faster and last longer so you get maximum productivity at the lowest total cost. Designed for Welding & Fabrication professionals who need the best solution for the toughest jobs.



With **2X** the strength
and **10X** the speed
meet the revolutionary
Dimide Clamp

Like us on **facebook**
or find us at
DimideClamps.com

Support us on
KICKSTARTER
Launching November 16th

VISIT US AT
FABTECH
BOOTH #C17121

ALM Positioners Inc

Booth N1814
Head & Tailstock Positioner
Wireless Communication



Wireless communication is an option for a head and tailstock positioner that eliminates the need of hard wiring between the head and tailstock. There is a high degree of reliability due to trusted wireless 2.0 technology.

CMP Automation

Booth N7025
Welding Automation



CMP Automation designs and manufactures fully automated custom welding

systems and robotic welding solutions and offers high quality welding solutions for a broad range of applications.

HBS Studwelding Inc

Booth N5303
HBS CDi 502



The HBS CDi 502 provides effortless welding. Experience a perfect weld in 2 steps just select diameter and push the trigger.

Hypertherm

Booth N3724, C27069
Powermax45 XP



Hypertherm introduces its Powermax45 XP – successor to the best-selling Powermax of all time – offering the most power and versatility in its class with 6.5

kilowatts of output power and the ability to easily cut, gouge, and mark any type of material.

Koike Aronson Inc/Ransome

Booth N4720
MD Positioner Line

The MD Positioner line features geared slew rings, variable speed AC drives, manual height adjusting bases and thru-holes for purging capabilities.

Miller Electric Mfg Co

Booth N3329
ArcReach™ Stick/TIG Remote



For use with the XMT® 350 CC/CV, XMT 450 CC/CV and Dimension™ 650 models that are ArcReach compatible, the remote allows welding operators to

change stick/TIG weld settings at the weld joint, which reduces downtime and improves safety.

Big Blue® Air Pak Welder/Generator

This 600-amp machine features a powerful EPA Tier 4 Final and compliant Deutz engine rated at 65.7 horsepower that is ideal for industrial applications including rail, mining, construction and fabrication.

COR-MET®

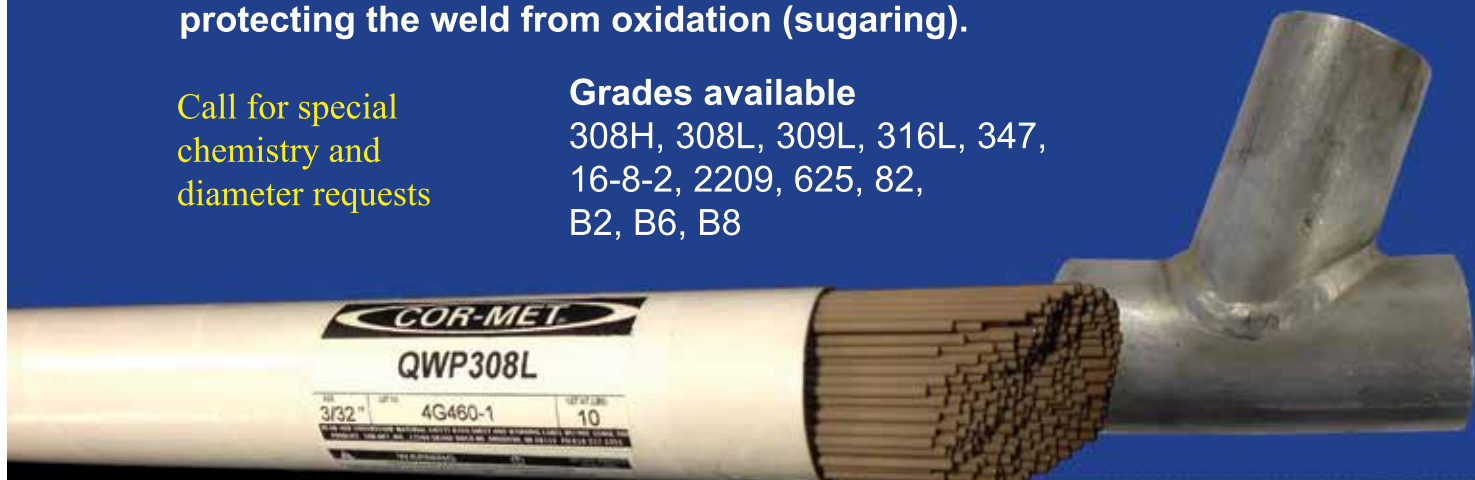
COR-MET QWP Flux Coated TIG wire

Eliminate the need for gas purging and backing for TIG pipe welding. The QWP Flux Coated TIG rod forms a slag on the backside of the pipe protecting the weld from oxidation (sugaring).

Call for special chemistry and diameter requests

Grades available

308H, 308L, 309L, 316L, 347,
 16-8-2, 2209, 625, 82,
 B2, B6, B8



Manufactured by COR-MET INC., Brighton, Michigan USA 800-848-2719
 www.cor-met.com / sales@cor-met.com FABTECH 2016 Booth N2018

Welding Machines/ Equipment

Miller Electric Mfg Co

Booth N3329
**Multimatic™ 215 Multiprocess
Welder**



Delivering all-in-one multiprocess capabilities for MIG, flux-cored, DC TIG and DC stick welding, this compact machine weighs just 38 pounds and is capable of welding up to 3/8-inch thick mild steel in a single pass.

Nederman LLC

Booth N2734
Air Purification Tower



Stand-alone filtration at its best. Nederman's Air Purification Tower is the perfect choice if source extraction is not a satisfying option.

Optrel Inc

Booth N1223
Welding Helmet



Optrel introduces its radically reinvented automatic welding helmet, combining the Swiss maker's latest developments and top innovations in one product.

Tregaskiss

Booth N3733
TOUGH GUN™ TT3 Reamer



The reamer from Tregaskiss has been enhanced with digital Ethernet communications to simplify integration into companies' digital controls infrastructure, all at a lower cost.

TOUGH GUN™ Reamer Stand



Designed exclusively for Tregaskiss TOUGH GUN TT3 and TOUGH GUN TT3E Reamer robotic nozzle cleaning stations, this durable stand is customizable in heights ranging from 18 to 45 inches.

TRU-FIT Products TRU-Weld

Booth N5736
**TW-4 - Capacitor Discharge
Stud Welder**



Tru-Weld Equipment is proud to introduce its line of TW-series capacitor discharge stud welding equipment. This line of machines delivers increased portability, functionality, as well as an intuitive touchscreen interface for rapid operation.

Nederman

Nederman Air Purification Tower

Innovative Ambient Filtration

Nederman's Air Purification Tower is a cost-effective and creative approach to controlling welding fume when:

- Ducting cannot be easily installed in the workspace
- Welding on large objects and capture-at-source is not practical
- Robotics and automation obstruct localized filtration
- Complementary to capture at source or local extraction

Visit us at booth N2734

www.nederman.com

Special Events

There are a lot of great events happening this year at FABTECH. You won't want to miss the opening keynote, lively panel discussions, the RUN4MFG 5K, plus much more. All events are free and open to all attendees unless otherwise noted.

WEDNESDAY, NOVEMBER 16		LOCATION
9:00 - 10:00 AM	 OPENING KEYNOTE The Power to Win! Speaker: Sugar Ray Leonard , boxing legend and best-selling author of <i>The Big Fight, My Life In and Out of the Ring</i> Sponsored by:  MITSUBISHI LASER	FABTECH Theater Central Hall Lobby
12:30 - 1:30PM	PANEL DISCUSSION State of the Industry: Post-Election Analysis	FABTECH Theater Central Hall Lobby
THURSDAY, NOVEMBER 17		LOCATION
7:30 - 10:30 AM	 Women of FABTECH Breakfast with Tech Tour Speaker: Jennifer Cipolla , Center for Additive Technology Advancement, GE Cost: \$15	Room N101
8:30 - 9:30 AM	PANEL DISCUSSION Development Trends in Additive Manufacturing and 3D Printing	FABTECH Theater Central Hall Lobby
12:30 - 1:30 PM	PANEL DISCUSSION Advanced Manufacturing: Creating Competitive Advantages for Product Development Sponsored by:  PLEX <small>THE MANUFACTURING CLOUD</small>	FABTECH Theater Central Hall Lobby
3:00 - 5:00 PM	NETWORKING EVENT Happy Hour <i>Complimentary beverage ticket included with event registration</i>	Exhibit Halls
FRIDAY, NOVEMBER 18		LOCATION
6:30 - 8:30 AM	RUN4MFG 5K Run/Walk Registration Open: 6:30 AM Event Start: 7:00AM Cost: \$35.00, After Nov. 4 \$50.00	Town Square Las Vegas
9:00 - 10:00 AM	 Shop Talk With Counting Cars From the hit reality series <i>Counting Cars</i> , show stars Kevin Mack and "Horny" Mike Henry will be at FABTECH to talk shop with attendees.	FABTECH Theater Central Hall Lobby
WEDNESDAY, NOVEMBER 16 - THURSDAY, NOVEMBER 17		LOCATION
Wed: 9:00 AM - 5:00 PM Thurs: 7:00 AM - 1:00 PM	Welders Without Borders: Welding Thunder Team Fabrication Competition	Silver Lot

Education Program

WEDNESDAY, NOVEMBER 16

SCHEDULE-AT-A-GLANCE

TECHNOLOGY	8:00 AM – 10:00 AM	10:30 AM – 12:30 PM	1:30 PM – 3:30 PM
FINISHING		C20: The Basics of a Successful Powder Coating Operation B	C30: NEW! Improving Powder Coating Processes I
		C21: The Basics of a Successful Electrocoating Operation B	C31: NEW! Pretreatment Chemistries & Operation Basics B
		C22: The Basics of a Successful Porcelain Operation B	C32: Conveying Parts Efficiently I
CUTTING	F10: NEW! Waterjet Cutting Advancements and Technology I		
LASER	F11: NEW! Overview of Solid State/Fiber Laser and Selection for Design Considerations B	F21: NEW! High Power Laser Applications B	F31: NEW! Robotic Laser Design and Concept Applications I
LEAN	F12: Lean Principle: Strategic Planning and Organizational Alignment I	F22: Lean Principle: Developing People and Processes B	F32: Lean Tools: Flow and Pull B
ADDITIVE MANUFACTURING		F23: NEW! Fundamentals of Additive Manufacturing for Fabricators B	F33: NEW! Big Area Additive Manufacturing and the Future I
WORKFORCE DEVELOPMENT	F14: NEW! Next-Gen Workforce and Conflict Management B	F24: NEW! Creating Frontline Leadership for a Performance-Based Organization I	F34: NEW! Accelerating Workforce Performance Through Best Practices in Learning and Development I
MANAGEMENT	F15: NEW! Accelerating Profitability for Successful Manufacturers I	F25: NEW! Preparing for Industry 4.0 B	F35: NEW! Marketing 101 for Fabricators B
JOB SHOP SOLUTIONS	F16: NEW! Smart Machines and Manufacturing Applications B	F26: NEW! Selecting the Right Partners & Overcoming Challenges in China for Manufacturing Businesses I	F36: NEW! Lean Principle: Design Sustainability for the Job Shop I
AUTOMATION	F17: NEW! Connected Enterprise for the Factory Floor 4.0 I	F27: NEW! Machine Monitoring and Cyber Risks for the Factory Floor I	F37: NEW! Robotic Automation Systems I
FORMING & FABRICATING	F18: Advancements in Press Brake Technology A	F28: Coil Processing: Leveling and Slitting I	F38: Roll Form Tooling Installation, Troubleshooting and Lubricants I
		F29: Press Brake Selection I	F39: NEW! Tube Fabricating 101 I
STAMPING	S10: NEW! Lubricant Application and Cleaning B	S20: NEW! Material Properties B	S30: NEW! Tool Steel and Heat Treatment B
	S11: Improving Formability I	S21: Error Proofing B	S31: In-Die Technologies I
WELDING			
SEMINARS	W10: D11 - Code Clinic	8:30 AM	– 4:30 PM
	W11: Crash Course of Welding Inspection Technology Seminar (WIT)	8:30 AM	– 4:30 PM
	W12: D17.1 - Code Clinic	8:30 AM	– 4:30 PM
	W13: The Why and How of Welding Procedure Specifications – Beginner	8:00 AM	– 12:00 PM
	W14: The Why and How of Welding Procedure Specifications – Advanced	1:00 PM	– 5:00 PM
	W15: The Why and How of Welding Procedure Specifications – Both	8:00 AM	– 5:00 PM
	W16: ASME Section IX, B31.1 & B31.3 Code Clinic – Day 1	8:30 AM	– 4:30 PM
CONFERENCES	W25: Destructive and Non-Destructive Testing Conference	8:00 AM	– 5:00 PM
	W26: Thermal Spray Coatings – FREE	1:00 PM	– 5:00 PM
	W27: So You're the New Welding Engineer – Day 1	8:00 AM	– 5:00 PM
PROFESSIONAL PROGRAM	W31: Session 1: Welding Metallurgy & Weldability Session A	2:00 PM	– 5:00 PM
	Session 2: Modeling	2:00 PM	– 5:00 PM
	Session 3: Arc Welding	2:00 PM	– 5:00 PM
EDUCATIONAL SESSIONS	W36: National Center for Welding Education and Training, Weld-Ed	9:00 AM	– 3:30 PM
SPECIAL PROGRAMS	W38: AWS Prayer Breakfast	7:00 AM	– 8:30 AM
	W39: 40th International Brazing and Soldering Symposium – FREE	8:00 AM	– 5:00 PM
	Welders Without Borders: Welding Thunder Team Fabrication Competition	9:00 AM	– 5:00 PM

Detailed session descriptions, speakers, pricing, room locations and more can be found at fabtechexpo.com/edu.

THURSDAY, NOVEMBER 17		SCHEDULE-AT-A-GLANCE	
TECHNOLOGY	8:00 AM – 10:00 AM	10:30 AM – 12:30 PM	1:30 PM – 3:30 PM
FINISHING	C40: NEW! Adding Finishing to a FAB Shop – Design Criteria B	C50: NEW! Adding Finishing to a FAB Shop – Part Cleaning & Spray Booths B	C60: NEW! Adding Finishing to a FAB Shop – Coating Application & Curing B
	C41: NEW! Efficient Paint & Powder Coating Batch Operations B	C51: NEW! Pretreatment Regulations I	C61: NEW! Hooks, Racks & Stripping Technologies B
	C42: NEW! Advanced Electrocoating Concepts A	C52: Efficient Curing with Infrared B	
CUTTING			F60: Comparative Cutting With a Tech Tour B
LASER	AWF100: NEW! Laser Welding for Today's Fabricator Workshop I		F61: NEW! Laser Joining Applications I
LEAN	F42: NEW! Lean: Lessons in Kata and Visual Workplace for Managing Fabrication I	F52: Value Stream Mapping: Addressing the Differences Between the Office and Shop Floor I	F62: Lean Tools: Quick Changeover and TPM B
ADDITIVE MANUFACTURING	F43: NEW! Laser Metal Fusion and Laser Metal Deposition for Additive Manufacturing B	F53: NEW! Design and 3D Merging Technologies for Additive Manufacturing I	
WORKFORCE DEVELOPMENT	F44: NEW! Building Teams and a Quality Culture for Team Leaders B	F54: NEW! Delegate, Influence and Motivate Employees for Effective Management B	F64: NEW! Manufacturing Workforce: Veterans, Skilled Labor and Resources for Dedicated Employees B
MANAGEMENT	F45: Create Lasting Strategic Business Value I	F55: NEW! Research Like a Pro to Grow Your Business B	F65: NEW! Leveraging Disruptive Technologies to Become the Fabricator of the Future I
JOB SHOP SOLUTIONS	F46: NEW! Software Solutions for Fabricators I	F56: Structural Fabrication Technology B	F66: NEW! A Competitive Roadmap and Strategic Plan for the Fabrication Industry B
AUTOMATION	F47: NEW! Automating the Shop Floor and Reducing Lead Time B	F57: NEW! Robotic Joining Technology I	F67: NEW! Predictable and Virtual Concepts and Design A
FORMING & FABRICATING	F48: Press Brakes for Engineers B	F58: Tube Producing/Joining B	F68: Roll Forming Basics and Justification B
	F49: Tube Laser Processing 101 B	F59: Press Brake Safeguarding: Changes to ANSI B11.3 I	F69: Punching I
STAMPING	S40: NEW! Formability Analysis B	S50: NEW! Solving Progressive Die Problems A	S60: Lubrication Technology I
	S41: Sensor Basics B	S51: Press Maintenance I	S61: NEW! ANSI Z244.1 I
WELDING			
SEMINARS	W16: ASME Section IX, B31.1 & B31.3 Code Clinic – Day 2		8:30 AM – 4:30 PM
	W17: D1.5 – Bridge Code Clinic – 2015		8:30 AM – 4:30 PM
	W18: Ethics Seminar for Certified Welding Inspectors – Part A		8:00 AM – 12:00 PM
	W19: What to Expect as a New Certified Welding Inspector – Part B		1:00 PM – 5:00 PM
	W20: Ethics Seminar for Certified Welding Inspectors & What to Expect as a New Certified Welding Inspector (Part A & B)		8:00 AM – 5:00 PM
	W21: Better Understanding of Welding Symbols (A2.4 and A3.0)		8:30 AM – 4:30 PM
	W22: The NEW Visual Inspection Workshop		8:00 AM – 5:00 PM
	W23: Fundamentals of Liquid Penetrant Testing for CWI's and Quality Assurance Personnel		8:30 AM – 4:30 PM
CONFERENCES	W27: So You're the New Welding Engineer – Day 2		8:00 AM – 5:00 PM
	W28: Distortion Control Conference		8:00 AM – 5:00 PM
RWMA SCHOOL	W29: RWMA Resistance Welding School – Day 1		7:45 AM – 5:00 PM
PROFESSIONAL PROGRAM	W32: Session 4: Plenary Session		8:00 AM – 10:00 AM
	Session 5: Battery Welding		10:00 AM – 12:00 PM
	Session 6: Honorary Symposium for Prof. T. Eagar – Session A		10:00 AM – 12:00 PM
	Session 7: Mechanical Properties		2:00 PM – 4:30 PM
	Session 8: Honorary Symposium for Prof. T. Eagar – Session B		2:00 PM – 5:00 PM
	Session 9: Sensing and Analysis		2:00 PM – 5:00 PM
EDUCATIONAL SESSIONS	W37: AWS Education Sessions		8:30 AM – 5:00 PM
SPECIAL PROGRAMS	W40: AWS Awards Luncheon		12:00 PM – 2:00 PM
	Welders Without Borders: Welding Thunder Team Fabrication Competition		7:00 AM – 1:00 PM

Detailed session descriptions, speakers, pricing, room locations and more can be found at fabtechexpo.com/edu.

Education Program (cont'd)

FRIDAY, NOVEMBER 18		SCHEDULE-AT-A-GLANCE	
TECHNOLOGY	8:00 AM – 10:00 AM	10:30 AM – 12:30 PM	1:30 PM – 3:30 PM
FINISHING	C70: NEW! Pretreatment Performance & Analysis I	C81: NEW! Trends in Liquid Industrial Finishing A	
	C71: NEW! Presentación en Español: En Polvo Automatización, Eficiencia y Control de Procesos — Ideas para Su Compañía (<i>Powder Coating Automation, Efficiency, and Process Control — Ideas for Your Company</i>) I	C82: NEW! Safety First & Maintenance Predictability A	
CUTTING	F70: NEW! Technical Advancements in Plasma Cutting I	F80: NEW! Cutting Tools and Applications B	
LEAN	F72: Lean Tools: 5S Workplace Organization and Standardization B	F82: NEW! Lean Principle: Working Together with Six Sigma and Case Studies on Transformation and Continuous Improvement I	F92: NEW! Lean Principle: Transformation and Productivity B
WORKFORCE DEVELOPMENT	F74: NEW! Workforce: Funding and New Contract Labor Rules B		
MANAGEMENT	F75: Succession Planning 101 B	F85: NEW! Social Media and Branding 101 B	F95: NEW! Operating in the Manufacturing Environment: Risk Assessment and New Rules for R&D Tax Credits B
JOB SHOP SOLUTIONS	F76: NEW! Marketing and Sales for Fabricators B	F86: Sustainable and Revenue Savings for The Job Shop B	F96: Safety Strategies for Fabricators B
AUTOMATION	F77: NEW! Benefits of Deburring and Leveling in Today's Manufacturing Environment B		
FORMING & FABRICATING	F78: Press Brake Tooling I	F88: Advanced Roll Forming Tooling and Line Troubleshooting A	
	F79: NEW! Steel Metal 101: Mill to Fabricator B	F89: Advanced Metals & Materials A	
STAMPING	S70: Springback Analysis A	S80: NEW! AHSS Tooling Technology B	
	S71: NEW! Modern Press Technology I	S81: In-Die Sensing B	
WELDING			
SEMINARS	W24: Fundamentals of Radiographic Inspection for CWI's and Quality Assurance Personnel 8:30 AM – 4:30 PM		
RWMA SCHOOL	W29: RWMA Resistance Welding School – Day 2 8:00 AM – 4:30 PM		
PROFESSIONAL PROGRAM	W33: Session 10: Dissimilar Joining Applications 8:00 AM – 12:00 PM Session 11: Solid-State Processes 8:00 AM – 12:00 PM Session 12: Overlay and Additive Manufacturing 8:00 AM – 12:00 PM Session 13: Welding Metallurgy & Weldability Session B 1:00 PM – 4:30 PM Session 14: Applied Technologies 1:00 PM – 4:30 PM Session 15: Advanced Controls and Systems 1:00 PM – 4:30 PM		
SPECIAL PROGRAMS	AWS Certification Exam (advance application required). 7:00 AM – 6:00 PM		

EXPERIENCE LEVELS

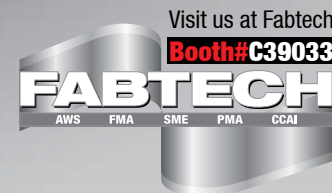
Use this key along with the Schedule-at-a-Glance to find the education that meets your needs.

B Basic – Recommended for the attendee who is new to the industry or needs a refresher on the topic.

I Intermediate – Designed for the attendee who already has a basic understanding of the subject matter.

A Advanced – For the attendee with several years of experience who is seeking more in-depth information.

ZOOM FIBER



SPEED • POWER • VERSATILITY

Zoom, Zoom with Mitsubishi Laser

Mitsubishi Laser is the only company with ZOOM Fiber technology. Our all in one ZOOM Fiber head design allows our ZOOM series to be the most versatile laser cutting machines available. Visit mcmachinery.com today or call 630-616-5920 for a complete overview on Zoom Technology.



Experience the difference: mills designed with fab shops in mind

With 30 years experience delivering sophisticated solutions for a variety of shops, we know what fabricators need in a mill. From versatile, cost-efficient models to sophisticated 5-axis machines—we've built a line to meet your needs. Partner with us, and leverage a single source provider with expertise in shop floor integration, automation, and the industry's leading service and support network.

MC Machinery's product line includes Laser, Milling, Press Brake, Turning, EDM, and Additive Machines.

To learn more, call 866-994-7856 or visit www.mcmachinery.com

Follow us on Twitter @mc_mits





NORTH AMERICA'S LARGEST METAL FORMING,
FABRICATING, WELDING AND FINISHING EVENT

NOVEMBER 16-18, 2016

Las Vegas, Nevada USA



Scan code with your
mobile device to watch
FABTECH in action!

SAVE \$50.

Register at fabtechexpo.com

Use Promo Code

Fabricators & Manufacturers Association, Int'l.®
833 Featherstone Road
Rockford, IL 61107-6302

BUILDING MOMENTUM

MARK YOUR CALENDAR FOR MORE FABTECH® EVENTS



FABTECH Mexico
May 2-4, 2017
Monterrey, Mexico



FABTECH Chicago
Nov. 6-9, 2017
Chicago, IL USA



FABTECH Canada
Spring 2018
Toronto, Ontario Canada